

# CPI Technology Instructions



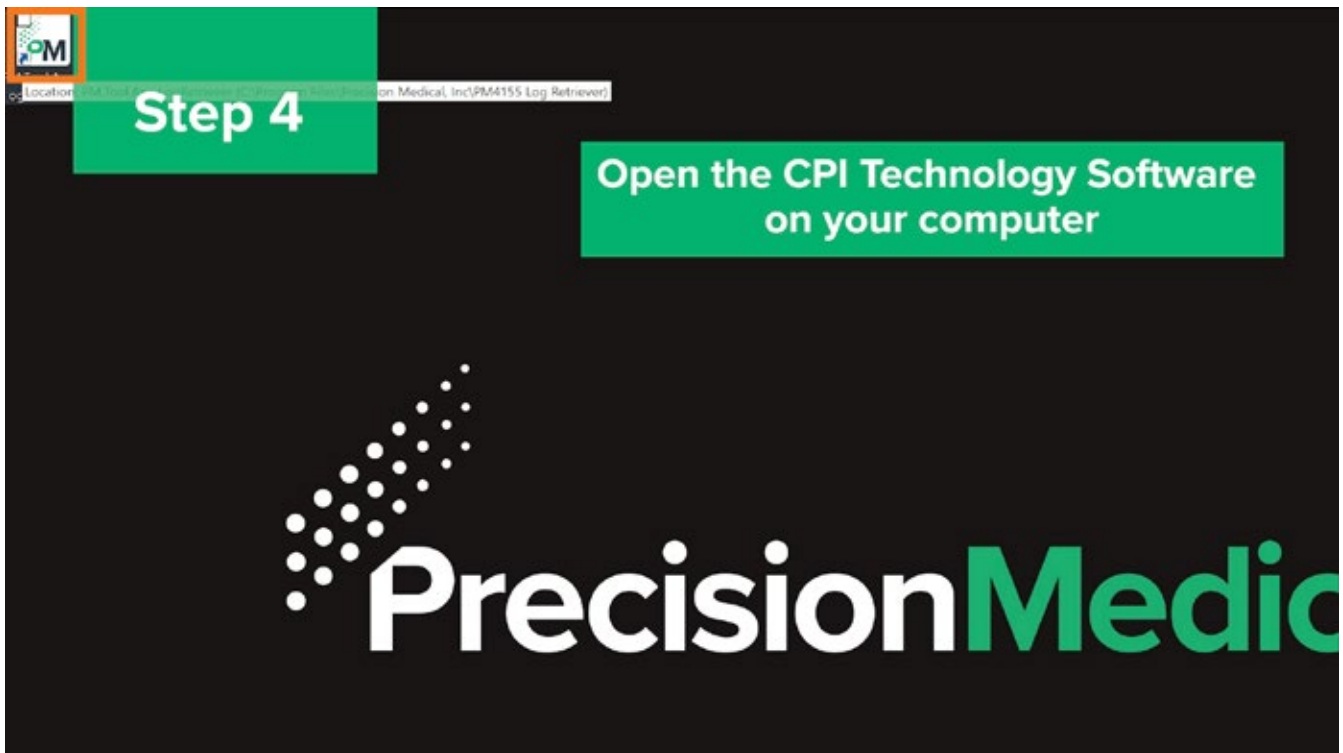
**Step 1:** Download the CPI technology Software on a Window 10 computer.



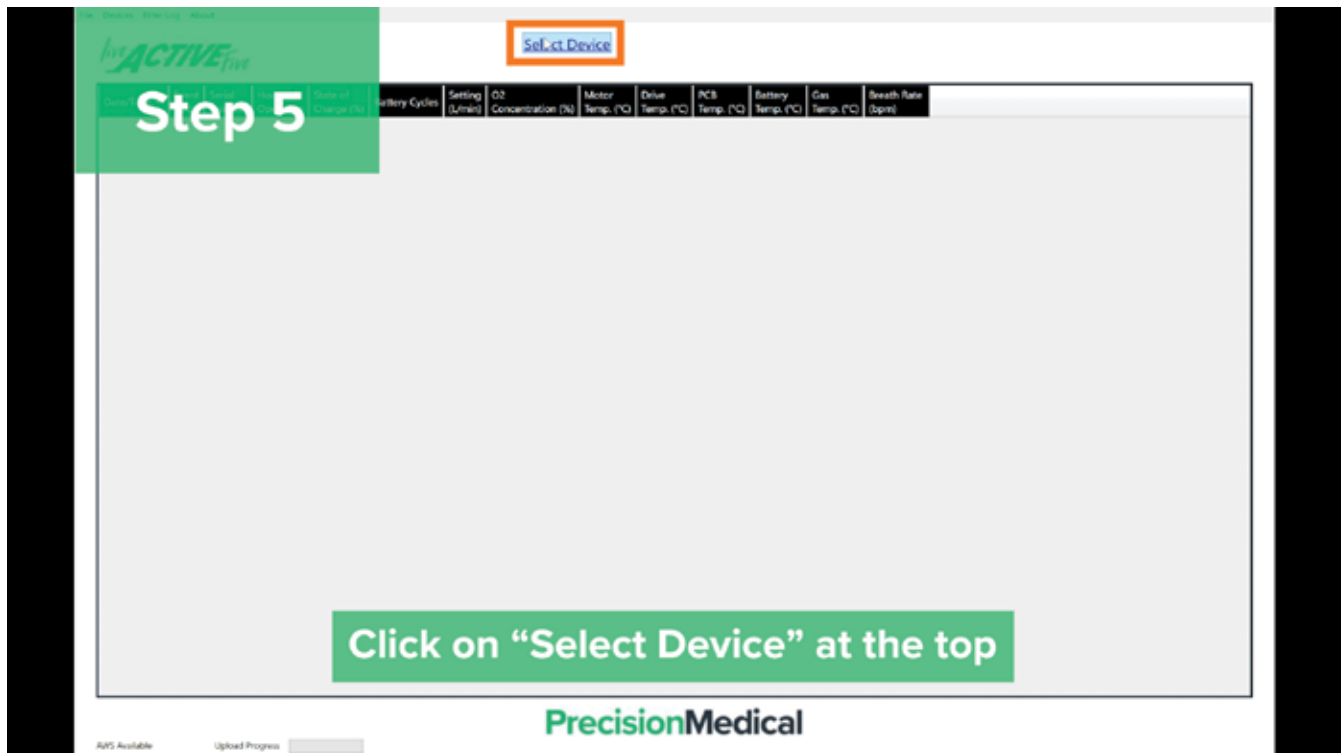
**Step 2:** Plug in the portable oxygen concentrator's AC Power Cord in an outlet.



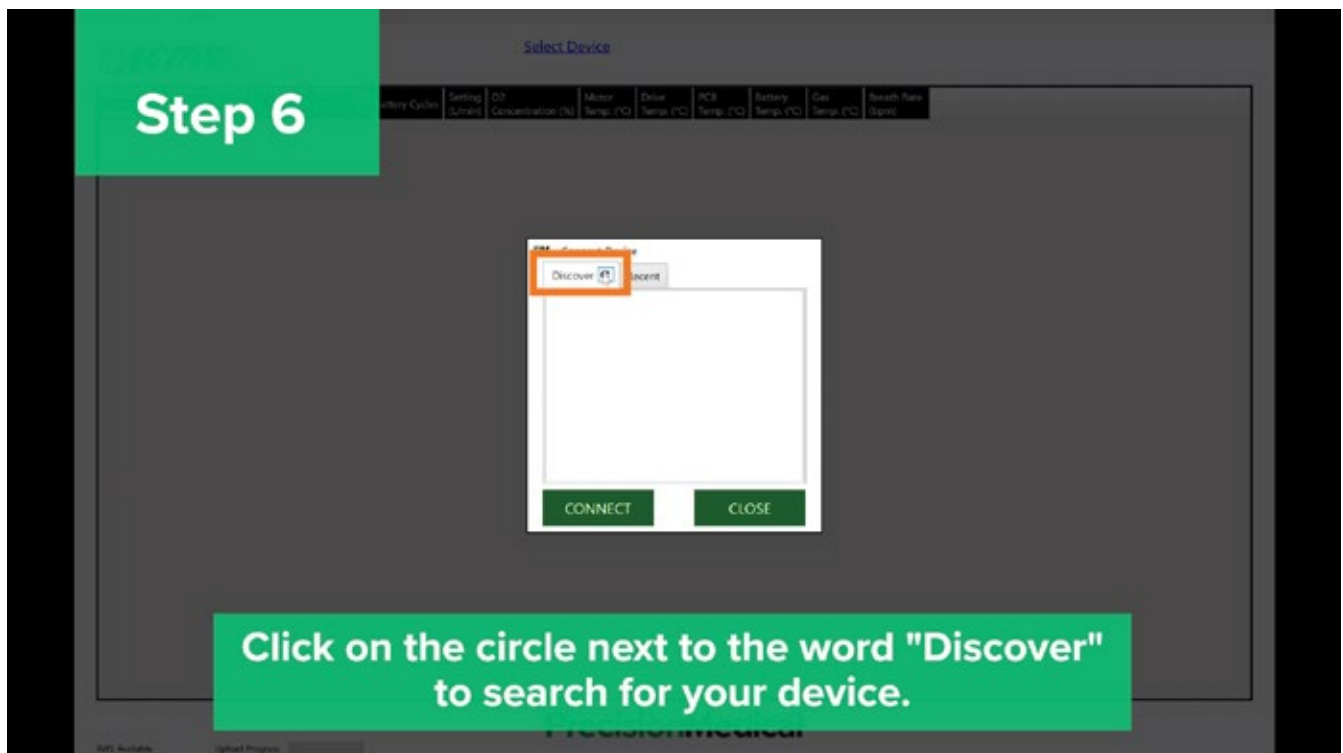
**Step 3:** Plug in the AC Power Adapter to the portable oxygen concentrator.



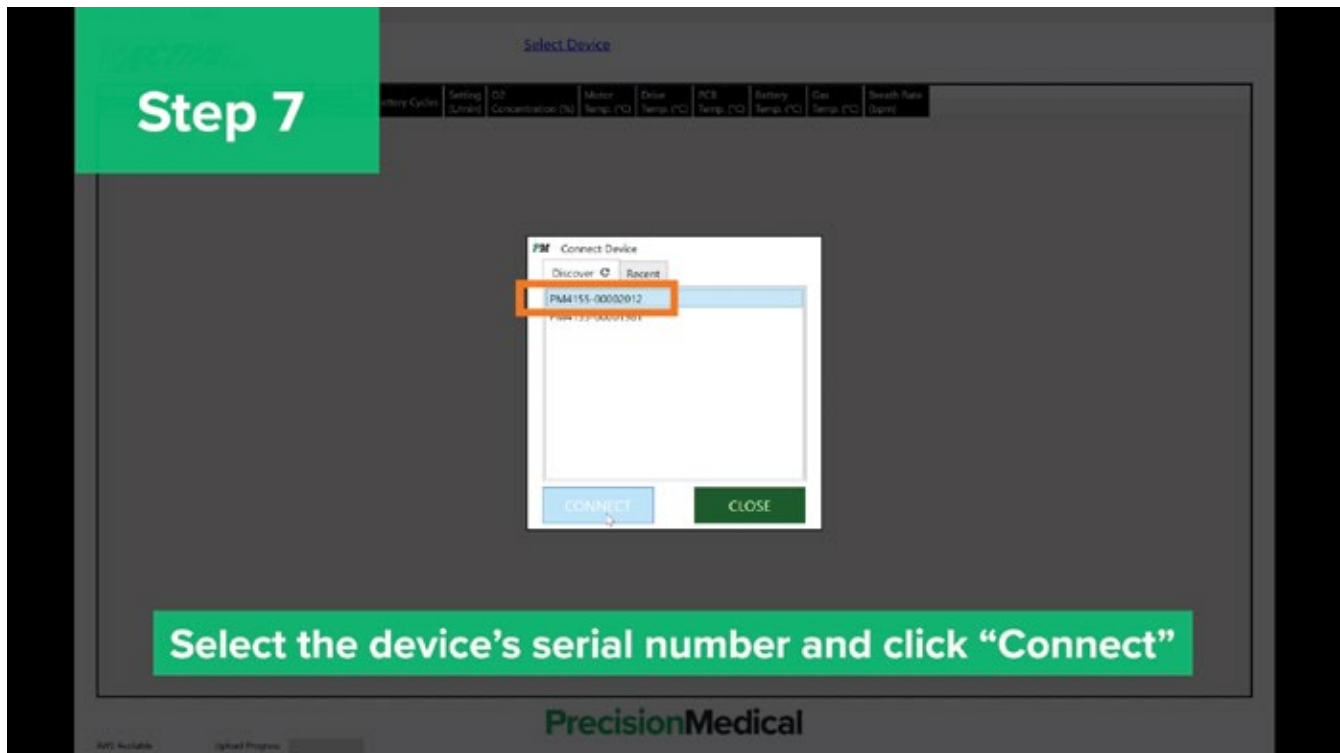
**Step 4:** Open the CPI Software on your computer.



**Step 5:** Once you are in the software, click on the "select device" at the top.



**Step 6:** Click on the circle next to the word "Discover" to search for your device.



**Step 7:** Look for your device's serial number in the discover tab, select your serial number and click connect.



**Step 7a:** Make sure you see the Bluetooth icon on the portable oxygen concentrator screen.

# Step 8

CONNECTED  
SN: 2012

Battery Cycles    Setting (L/min)    O2 Concentration (%)    Motor Temp. (°C)    Drive Temp. (°C)    PCB Temp. (°C)    Battery Temp. (°C)    Gas Temp. (°C)    Breath Rate (bpm)

Device  
Serial Number: 2012  
Status: Connected

RETRIEVE LOGS

Connected  
Connected  
Requesting logs...  
Fetching Logs ...

DISCONNECT    CLOSE

Once connected, click "Retrieve Logs"

PrecisionMedical

**Step 8:** Once you are connected, click on "retrieve logs" on the top right corner of the pop up.

CONNECTED  
SN: 2012

Date/Time	Event Code	Serial Number	Hours of Operation	State of Charge (%)	Battery Cycles	Setting (L/min)	O2 Concentration (%)	Motor Temp. (°C)	Drive Temp. (°C)	PCB Temp. (°C)	Battery Temp. (°C)	Gas Temp. (°C)	Breath Rate (bpm)
2021-06-18 14:24	(S) O2 Sensor Settle	2012	0	---	---	0	18	22	33	22	---	22	---
2021-06-28 18:32	(S) Power Up	2012	0	---	---	0	---	---	---	---	---	---	---
2021-06-28 18:32	(S) Power Settle	2012	0	---	---	0	---	---	---	---	---	---	---
2021-06-28 18:32	(S) Power Up	2012	0	---	---	0	---	---	---	---	---	---	---
2021-06-28 18:32	(S) Power Settle	2012	0	---	---	0	---	---	---	---	---	---	---
2021-06-28 18:33	(S) O2 Sensor Settle	2012	0	96	5	0	18	23	33	23	22	23	---
2021-06-28 18:33	(S) Power Down	2012	0	96	5	0	18	23	33	23	22	23	---
2021-06-28 18:35	(S) Power Up	2012	0	---	---	0	---	---	---	---	---	---	---
2021-06-28 18:35	(S) Power Settle	2012	0	---	---	0	---	---	---	---	---	---	---
2021-06-28 18:35	(A) Supply Connected	2012	0	96	5	0	18	23	34	23	22	23	---
2021-06-28 18:35	(S) O2 Sensor Settle	2012	0	96	5	0	18	23	34	23	22	23	---
2021-06-28 18:39	(A) Standard Test Activated	2012	0	99	5	0	18	23	41	31	22	23	---
2021-06-28 18:39	(A) Setting 2	2012	0	99	5	2	21	26	41	31	22	23	20
2021-06-28 18:39	(S) Running, First Cycle	2012	0	100	5	2	31	28	44	31	22	23	20
2021-06-28 18:40	(A) Setting Off	2012	0	100	5	2	31	28	44	31	22	23	20
2021-06-28 18:40	(A) Setting 5	2012	0	100	5	5	33	28	44	31	22	23	---
2021-06-28 18:40	(S) Running, First Cycle	2012	0	100	5	5	37	30	46	31	22	23	---
2021-06-28 18:41	(U) No Breath Detected	2012	0	100	5	5	37	36	50	29	22	23	---
2021-06-28 18:41	(A) Alert Acknowledged	2012	0	100	5	5	38	36	50	29	22	23	20
2021-06-28 18:42	(S) Running, 2 Minutes	2012	0	100	5	5	88	42	55	29	22	23	20
2021-06-28 18:43	(A) Setting Off	2012	0	100	5	5	85	46	58	29	22	23	20
2021-06-28 18:43	(A) Setting 2	2012	0	100	5	2	85	46	58	29	22	23	---
2021-06-28 18:43	(A) Setting 4	2012	0	100	5	4	85	46	58	29	22	23	---
2021-06-28 18:43	(A) Setting 3	2012	0	100	5	2	85	46	58	29	22	23	---
2021-06-28 18:43	(A) Setting 6	2012	0	100	5	2	85	46	58	29	22	23	---
2021-06-28 18:43	(S) Audit Off and Change	2012	0	100	5	2	85	46	58	29	22	23	---
2021-06-28 18:43	(S) Audit Off	2012	0	100	5	2	85	46	58	29	22	23	---

The software will retrieve and display the device data for you to review

PrecisionMedical

**Step 8a:** Once you select your device and retrieve logs, give the software some time to retrieve the device data. You will see it displayed on the screen like this

File Devices Filter Log About

**CONNECTED**  
SN: 2012

Date/Time	Event Code	Serial Number	Hours of Operation	State of Charge (%)	Battery Cycles	Setting (L/min)	O2 Concentration (%)	Motor Temp. (°C)	Drive Temp. (°C)	PCB Temp. (°C)	Battery Temp. (°C)	Gas Temp. (°C)	Breath Rate (bpm)
2021-06-28 14:24	(S) O2 Sensor Settle	2012	0	---	---	0	18	22	33	22	---	22	---
2021-06-28 18:32	(S) Power Up (S) Power Settle	2012	0	---	---	0	---	---	---	---	---	---	---
2021-06-28 18:32	(S) Power Up (S) Power Settle	2012	0	---	---	0	---	---	---	---	---	---	---
2021-06-28 18:33	(S) O2 Sensor Settle	2012	0	96	5	0	18	23	33	23	22	23	---
2021-06-28 18:33	(S) Power Down	2012	0	96	5	0	18	23	33	23	22	23	---
2021-06-28 18:35	(S) Power Up (S) Power Settle (A) Supply Connected	2012	0	---	---	0	---	---	---	---	---	---	---
2021-06-28 18:35	(S) O2 Sensor Settle	2012	0	96	5	0	18	23	34	23	22	23	---
2021-06-28 18:39	(A) Standard Test Activated (A) Setting 2	2012	0	99	5	0	18	23	41	31	22	23	---
2021-06-28 18:39	(S) Running, First Cycle	2012	0	99	5	2	21	26	41	31	22	23	20
2021-06-28 18:40	(A) Setting Off	2012	0	100	5	2	31	28	44	31	22	23	20
2021-06-28 18:40	(A) Setting 5	2012	0	100	5	5	33	28	44	31	22	23	---
2021-06-28 18:40	(S) Running, First Cycle	2012	0	100	5	5	37	30	46	31	22	23	---
2021-06-28 18:41	(U) No Breath Detected	2012	0	100	5	5	37	36	50	29	22	23	---
2021-06-28 18:41	(A) Alert Acknowledged	2012	0	100	5	5	58	36	50	29	22	23	20
2021-06-28 18:42	(S) Running, 2 Minutes	2012	0	100	5	5	88	42	55	29	22	23	20
2021-06-28 18:43	(A) Setting Off	2012	0	100	5	5	85	46	58	29	22	23	20
2021-06-28 18:43	(A) Setting 2	2012	0	100	5	2	85	46	58	29	22	23	---
2021-06-28 18:43	(A) Setting 4	2012	0	100	5	4	85	46	58	29	22	23	---
2021-06-28 18:43	(A) Setting 3	2012	0	100	5	3	85	46	58	29	22	23	---

**As the data is retrieved, the progress bar at the bottom will turn green. When the upload is complete, it will turn gray.**

Upload Progress

PrecisionMedical

API Available

**Step 8b:** As the device data is retrieved, the progress bar at the bottom will fully upload green and when it is fully done retrieving the data, it will turn gray.

File Devices Filter Log About

**CONNECTED**  
SN: 2012

**Step 9**

Date/Time	Event Code	Serial Number	Hours of Operation	State of Charge (%)	Battery Cycles	Setting (L/min)	O2 Concentration (%)	Motor Temp. (°C)	Drive Temp. (°C)	PCB Temp. (°C)	Battery Temp. (°C)	Gas Temp. (°C)	Breath Rate (bpm)
2021-06-28 14:24	(S) O2 Sensor Settle	2012	0	---	---	0	18	22	33	22	---	22	---
2021-06-28 18:32	(S) Power Up (S) Power Settle	2012	0	---	---	0	---	---	---	---	---	---	---
2021-06-28 18:32	(S) Power Up (S) Power Settle	2012	0	---	---	0	---	---	---	---	---	---	---
2021-06-28 18:33	(S) O2 Sensor Settle	2012	0	96	5	0	18	23	33	23	22	23	---
2021-06-28 18:33	(S) Power Down	2012	0	96	5	0	18	23	33	23	22	23	---
2021-06-28 18:35	(S) Power Up (S) Power Settle (A) Supply Connected	2012	0	---	---	0	---	---	---	---	---	---	---
2021-06-28 18:35	(S) O2 Sensor Settle	2012	0	96	5	0	18	23	34	23	22	23	---
2021-06-28 18:39	(A) Standard Test Activated (A) Setting 2	2012	0	99	5	0	18	23	41	31	22	23	---
2021-06-28 18:39	(S) Running, First Cycle	2012	0	99	5	2	21	26	41	31	22	23	20
2021-06-28 18:40	(A) Setting Off	2012	0	100	5	2	31	28	44	31	22	23	20
2021-06-28 18:40	(A) Setting 5	2012	0	100	5	5	33	28	44	31	22	23	---
2021-06-28 18:40	(S) Running, First Cycle	2012	0	100	5	5	37	30	46	31	22	23	---
2021-06-28 18:41	(U) No Breath Detected	2012	0	100	5	5	37	36	50	29	22	23	---
2021-06-28 18:41	(A) Alert Acknowledged	2012	0	100	5	5	58	36	50	29	22	23	20
2021-06-28 18:42	(S) Running, 2 Minutes	2012	0	100	5	5	88	42	55	29	22	23	20
2021-06-28 18:43	(A) Setting Off	2012	0	100	5	5	85	46	58	29	22	23	20
2021-06-28 18:43	(A) Setting 2	2012	0	100	5	2	85	46	58	29	22	23	---
2021-06-28 18:43	(A) Setting 4	2012	0	100	5	4	85	46	58	29	22	23	---
2021-06-28 18:43	(A) Setting 3	2012	0	100	5	3	85	46	58	29	22	23	---

**To remove the device, first click "Connected" at the top**

Upload Progress

PrecisionMedical

API Available

**Step 9:** When you are done retrieving all logs, click on the "Connected" on the top.

CONNECTED  
SN: 2012

Step 10

Serial Number	Hours of Operation	State of Charge (%)	Battery Cycle	Setting (L/min)	O2 Concentration (%)	Motor Temp. (°C)	Drive Temp. (°C)	PCB Temp. (°C)	Battery Temp. (°C)	Gas Temp. (°C)	Breath Rate (L/min)
2012	0	---	---	0	18	22	33	22	---	22	---
2012	0	---	---	0	---	---	---	---	---	---	---
2021-06-28 18:32(S) Power Up (S) Power Settle	2012	0	---	0	---	---	---	---	---	---	---
2021-06-28 18:33(S) O2 Sensor Settle	2012	0	96	5	0	18	23	23	22	23	---
2021-06-28 18:33(S) Power Down	2012	0	96	---	---	---	---	---	---	---	---
2021-06-28 18:35(S) Power Up (S) Power Settle (A) Supply Connected	2012	0	---	---	---	---	---	---	---	---	---
2021-06-28 18:35(S) O2 Sensor Settle	2012	0	96	---	---	---	---	---	---	---	---
2021-06-28 18:38(A) Standard Test Activated (A) Setting 2	2012	0	99	---	---	---	---	---	---	---	---
2021-06-28 18:39(S) Running, First Cycle	2012	0	99	---	---	---	---	---	---	---	---
2021-06-28 18:40(A) Setting Off	2012	0	100	---	---	---	---	---	---	---	---
2021-06-28 18:40(A) Setting 5	2012	0	100	---	---	---	---	---	---	---	---
2021-06-28 18:40(S) Running, First Cycle	2012	0	100	---	---	---	---	---	---	---	---
2021-06-28 18:41(A) No Breath Detected	2012	0	100	---	---	---	---	---	---	---	---
2021-06-28 18:41(A) Alert Acknowledged	2012	0	100	---	---	---	---	---	---	---	---
2021-06-28 18:42(S) Running, 2 Minutes	2012	0	100	---	---	---	---	---	---	---	---
2021-06-28 18:43(A) Setting Off	2012	0	100	---	---	---	---	---	---	---	---
2021-06-28 18:43(A) Setting 2	2012	0	100	---	---	---	---	---	---	---	---
2021-06-28 18:43(A) Setting 4	2012	0	100	5	4	85	46	58	29	22	---
2021-06-28 18:43(A) Setting 3	2012	0	100	5	3	85	46	58	29	22	---
2021-06-28 18:43(A) Setting Off	2012	0	---	---	---	---	---	---	---	---	---
2021-06-28 18:43(S) Audit, Off and Charging	2012	0	---	---	---	---	---	---	---	---	---
2021-06-28 18:43(S) Audit, Off and Charging	2012	0	---	---	---	---	---	---	---	---	---

PM Device

Serial Number: 2012

Status: Connected

Connected

[RETRIEVE LOGS](#)

[DISCONNECT](#) [CLOSE](#)

Then click "Disconnect"

PrecisionMedical

**Step 10:** Finally, click disconnect to remove your device from the program.

Oxygen Concentrators | Filings | Homecare | Hospital | Accessories | Our People
Eng. Contact | [W](#) | [C](#) | [S](#) | [G](#)

## CPI Notification Form

Fill out this form after syncing the Live Active File and uploading the data.

Name \*

Email

Phone Number \*

Live Active File Serial Number \*

Message \* Briefly describe the issue with the Live Active File

**Step 11:** Fill out the CPI Notification Form. Precision Medical will contact you in 1-2 business days after receiving the form to let you know the next steps regarding your device.

**Troubleshooting** – If you make it to Step 6 but are unable to discover your device’s serial number on the CPI Technology software, you might need a Bluetooth USB Adapter for your computer. We recommend this one: [Bluetooth 4.0 Dual-Mode Micro USB Adapter](#).