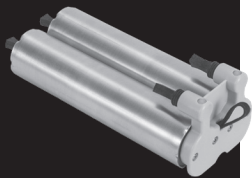


Sieve Bed Assembly

Replacement Instructions



1

Turn concentrator off, and remove the battery and external power from unit.



2

Turn unit upside down, and place on soft surface. Remove screws and bottom cover



3

Pull upward on the Pull String Loop while holding the device down to remove sieve bed assembly.



4

Remove 4 plugs from new sieve bed assembly, and slide it into the concentrator.



5

Gently push until sieve bed replacement is fully seated, flush with bottom surface. Replace bottom cover and secure screws.



6

Turn unit upright and insert battery. Gently push until battery is locked in place.

Register the Sieve Bed Assembly in the Concentrator

Press and hold the Audio Pause button to enter the menu. Press the 5 button to navigate to the **Sieve Beds** option. Press the 3 button to select the **Sieve Beds** option. Press the 3 button again to register the sieve bed assembly. "Done" will appear on the screen once completed. Press the Audio Pause button to exit the menu.

Precision Medical Limited Warranty

Precision Medical, Inc. (PMI) warrants the Sieve Bed Assembly (“Replacement Part”) is free from defects and in materials and workmanship under normal and proper use and when correctly maintained in accordance with the applicable instructions, for the following period:

Sieve Bed Assembly	1 Year
All warranties begin as of date of shipment of the replacement part by PMI to the original purchaser. For warranty claims:	
Replacement part provided by or purchased from DME – contact DME;	
Replacement part purchased directly from PMI – contact PMI	

No warranty is made with respect to normal wear and tear or damage due to neglect, misuse, accident, physical damage, or alteration of the replacement part.

Failure to operate the replacement part in accordance with PMI’s User Instructions shall void this Limited Warranty.

Upon receipt of the replacement part, Purchaser shall fully inspect each item.

Any claim must be made in writing by contacting PMI Customer Service within the warranty period following the discovery of a purported defect and/or the oxygen purity is below 87%. If necessary, PMI will issue a Return Goods Authorization (RGA). Replacement part(s) returned without an RGA may be refused and returned at Purchaser’s expense.

The sole remedy for any such defect in the replacement part shall be a replacement as determined by PMI.

Representatives of PMI or any retailers are not authorized to make oral warranties about the merchandise described in this contract, and any such statements shall not be relied upon and are not part of the contract for sale. Thus, this writing is a final, complete and exclusive statement of the terms of this contract.

This warranty is exclusive and is in lieu of any warranty of merchantability, fitness for a particular purpose or other warranty of quality, whether express or implied.

PMI shall not under any circumstances be liable for special, incidental or consequential damages including but not limited to lost profits, lost sales, or injury to person or property. Correction of non-conformities as provided above shall constitute fulfillment of all liabilities of PMI whether based on contract, negligence, strict tort or otherwise. PMI reserves the right to discontinue manufacture of any product or change product materials, designs, or specifications without notice.

Any additional action to enforce any provision of this Limited Warranty may be commenced only in the state or federal courts of Pennsylvania and exclusive jurisdiction of the Commonwealth of Pennsylvania.

PMI reserves the right to correct clerical or typographical errors without penalty.

This warranty is not transferable. Retain original receipt for valid proof of purchase.

For warranty or repair service contact PMI customer service at warranty@precisionmedical.com



This device may contain substances that could be harmful to the environment and must be disposed of properly. Follow local governing ordinances and recycling plans regarding disposal.

