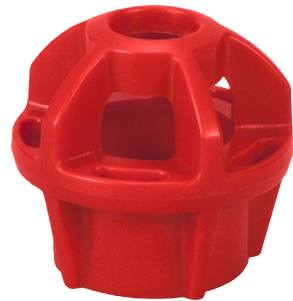


The Issue is Patient Safety, The Answer Is Precision Medical!



Trach Guard - Prevents accidental obstruction of the tracheotomy tube and will not allow accidental connection of respiratory equipment with standard 15mm and 22mm connections.



Night Check - Allows clinicians to check flow rates in dark environments to ensure safe, accurate delivery of oxygen therapy.

Updated Knobs - Boldly calls out gas type to avoid accidental misconnections.



Air Tag - Optional safety feature can be added to our Air Chrome Flowmeters, allowing clinicians to visually verify connection to correct gas source. Updated Air Knob is standard on all Air Flowmeters.