



## Part 11: Neonatal resuscitation

### 2010 International Consensus on Cardiopulmonary Resuscitation and Emergency Cardiovascular Care Science with Treatment Recommendations<sup>☆,☆☆</sup>

Jonathan Wyllie (Co-chair)<sup>\*,1</sup>, Jeffrey M. Perlman (Co-chair)<sup>1</sup>, John Kattwinkel, Dianne L. Atkins, Leon Chameides, Jay P. Goldsmith, Ruth Guinsburg, Mary Fran Hazinski, Colin Morley, Sam Richmond, Wendy M. Simon, Nalini Singhal, Edgardo Szyld, Masanori Tamura, Sithembiso Velaphi, on behalf of the Neonatal Resuscitation Chapter Collaborators

Approximately 10% of newborns require some assistance to begin breathing at birth, and <1% require extensive resuscitation (LOE 4<sup>1,2</sup>). Although the vast majority of newborn infants do not require intervention to make the transition from intrauterine to extrauterine life, the large number of births worldwide means that many infants require some assistance to achieve cardiorespiratory stability. Newborn infants who are born at term and are breathing or crying and have good tone must be dried and kept warm. These actions can be provided with the baby lying on the mother's chest and should not require separation of mother and baby.

All others need to be assessed to determine their need for one or more of the following actions in sequence:

- A. Initial steps in stabilization (dry and provide warmth, position, assess the airway, stimulate to breathe)
- B. Ventilation
- C. Chest compressions
- D. Medications or volume expansion

<sup>☆</sup> *Note from the writing group:* Throughout this article, the reader will notice combinations of superscripted letters and numbers (e.g., "Peripartum Suctioning<sup>NRP-011A,NRP-012A</sup>"). These callouts are hyperlinked to evidence-based worksheets, which were used in the development of this article. An appendix of worksheets, applicable to this article, is located at the end of the text. The worksheets are available in PDF format and are open access.

<sup>☆☆</sup> The European Resuscitation Council requests that this document be cited as follows: Wyllie J, Perlman JM, Kattwinkel J, Atkins DL, Chameides L, Goldsmith JP, Guinsburg R, Hazinski MF, Morley C, Richmond S, Simon WM, Singhal N, Szyld E, Tamura M, Velaphi S, on behalf of the Neonatal Resuscitation Chapter Collaborators. Part 11: Neonatal resuscitation: 2010 International Consensus on Cardiopulmonary Resuscitation and Emergency Cardiovascular Care Science with Treatment Recommendations. *Resuscitation* 2010;81:e260–e287.

<sup>\*</sup> Corresponding author at: The James Cook University Hospital, Middlesbrough, United Kingdom.

<sup>E-mail address:</sup> [jonathan.wyllie@stees.nhs.uk](mailto:jonathan.wyllie@stees.nhs.uk) (J. Wyllie).

<sup>1</sup> Co-chairs and equal first co-authors.

Progression to the next step is initially based on simultaneous assessment of 2 vital characteristics: heart rate and respirations. Progression occurs only after successful completion of the preceding step. Approximately 30 s is allotted to complete each of the first two steps successfully, reevaluate, and decide whether to progress to the next (see Fig. 1).

Since publication of the *2005 International Consensus on CPR and ECC Science with Treatment Recommendations*,<sup>3,4</sup> several controversial neonatal resuscitation issues have been identified. The literature was researched and a consensus was reached on the assessment of oxygenation and role of supplementary oxygen, peripartum management of meconium, ventilation strategies, devices to confirm placement of an advanced airway (e.g., tracheal tube or laryngeal mask airway), medications, maintenance of body temperature, postresuscitation management, and considerations for withholding and discontinuing resuscitation. Educational techniques for teaching, assessing, and maintaining resuscitation knowledge and skills and issues regarding the personnel needed at cesarean sections were also debated. The following are the major new recommendations:

- Progression to the next step following the initial evaluation is now defined by the simultaneous assessment of 2 vital characteristics: heart rate and respirations. Oximetry should be used for evaluation of oxygenation because assessment of colour is unreliable.
- **For babies born at term it is best to begin resuscitation with air rather than 100% oxygen.**
- **Administration of supplementary oxygen should be regulated by blending oxygen and air, and the concentration delivered should be guided by oximetry.**
- The available evidence does not support or refute the routine tracheal suctioning of infants born through meconium-stained amniotic fluid, even when the newborn is depressed.
- The chest compression–ventilation ratio should remain at 3:1 for neonates unless the arrest is known to be of cardiac aetiology, in which case a higher ratio should be considered.

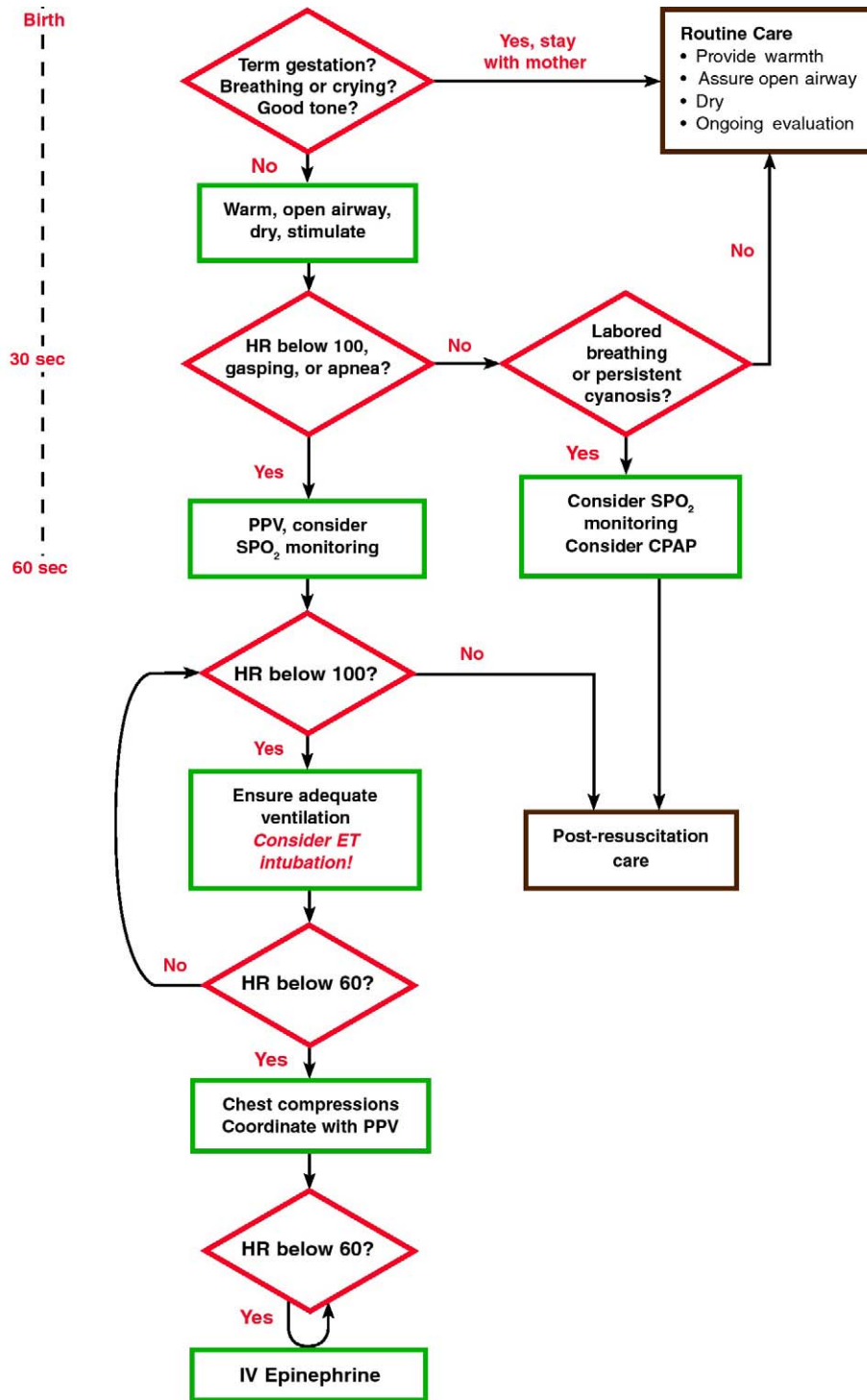


Fig. 1. Newborn Resuscitation Algorithm.

- Therapeutic hypothermia should be considered for infants born at term or near-term with evolving moderate to severe hypoxic–ischaemic encephalopathy, with protocol and follow-up coordinated through a regional perinatal system.
- It is appropriate to consider discontinuing resuscitation if there has been no detectable heart rate for 10 min. Many factors contribute to the decision to continue beyond 10 min.
- Cord clamping should be delayed for at least 1 min in babies who do not require resuscitation. Evidence is insufficient to recommend a time for clamping in those who require resuscitation.

### Initial assessment and intervention

#### Assessment of cardiorespiratory transition and need for resuscitation NRP-001A, NRP-001B, NRP-014A, NRP-014B

##### Consensus on science

A prompt increase in heart rate remains the most sensitive indicator of resuscitation efficacy (LOE 5<sup>5</sup>). Of the clinical assessments, auscultation of the heart is the most accurate, with palpation of the umbilical cord less so. However, both are relatively insensitive (LOE

2<sup>6</sup> and LOE 4<sup>7</sup>). Several studies have addressed the accuracy of pulse oximetry in measuring heart rate in the delivery room and have shown the feasibility of pulse oximetry during newborn resuscitation. However, none of these studies examined the impact of these measurements on resuscitation outcomes (LOE 4<sup>7,8</sup>). Pulse oximetry (SpO<sub>2</sub>) and heart rate can be measured reliably after 90 s from birth with a pulse oximeter designed to reduce movement artefact and a neonatal probe (LOE 4<sup>9,10</sup>). Preductal values, obtained from the right wrist or hand, are higher than postductal values.<sup>8,11</sup> Applying the oximeter probe to the subject before connecting it to the instrument will produce reliable results more quickly (LOE 4<sup>10</sup>).

There is clear evidence that an increase in oxygenation and improvement in colour may take many minutes to achieve, even in uncompromised babies. Furthermore, there is increasing evidence that exposure of the newly born to hyperoxia is detrimental to many organs at a cellular and functional level. For this reason colour has been removed as an indicator of oxygenation or resuscitation efficacy. The oximeter can be used to adjust the increase in oxygenation to that of the uncompromised baby born at term.

#### *Treatment recommendations*

Heart rate should remain the primary vital sign by which to judge the need for and efficacy of resuscitation. Auscultation of the precordium should remain the primary means of assessing heart rate. There is a high likelihood of underestimating heart rate with palpation of the umbilical pulse, but this is preferable to other palpation locations.

For babies who require ongoing resuscitation or respiratory support or both, the goal should be to use pulse oximetry. The sensor should be placed on the baby's right hand or wrist before connecting the probe to the instrument. Because of concerns about the ability to consistently obtain accurate measurements, pulse oximetry should be used in conjunction with and should not replace clinical assessment of heart rate during newborn resuscitation.

#### **Use of supplementary oxygen**<sup>NRP-013A,NRP-013B,NRP-014A,NRP-014B</sup>

##### *Consensus on science*

In term infants receiving resuscitation with intermittent positive-pressure ventilation, 100% oxygen conferred no advantage over air in the short term and resulted in increased time to first breath or cry or both (LOE 2<sup>12,13</sup>). Meta-analyses of these studies showed a decrease in mortality with the group for whom resuscitation was initiated with air.<sup>14,15</sup>

There is evidence in newborn animal models of asphyxia that exposure to high concentrations of oxygen at resuscitation does not confer any clinical advantage and is potentially harmful at the cellular level.<sup>16,17</sup> Two animal models of hypoxia–ischaemia and persistent bradycardia found that those resuscitated with room air rather than 100% oxygen developed untoward biochemical changes in the brain (LOE 5<sup>18,19</sup>).

In preterm infants at <32 weeks' gestation, if attempting to mimic the gradual rise in oxygen saturation of healthy term babies in the first 10 min after birth by titrating the concentration to the baby's saturation, initial use of air or 100% oxygen is more likely to result in hypoxaemia or hyperoxaemia, respectively, than initiation of resuscitation with 30% or 90% oxygen and titration to oxygen saturation (LOE 2<sup>11,20</sup>). There is insufficient evidence in babies born at 32–37 weeks' gestation to define the appropriate oxygen administration strategy.

##### *Treatment recommendation*

In term infants receiving resuscitation at birth with positive-pressure ventilation, it is best to begin with air rather than 100% oxygen. If despite effective ventilation there is no increase in heart

rate or if oxygenation (guided by oximetry) remains unacceptable, use of a higher concentration of oxygen should be considered.

**Because many preterm babies of <32 weeks' gestation will not reach target saturations in air, blended oxygen and air may be given judiciously and ideally guided by pulse oximetry.** Both hyperoxaemia and hypoxaemia should be avoided. If a blend of oxygen and air is not available, resuscitation should be initiated with air.

#### **Peripartum suctioning**<sup>NRP-011A,NRP-012A</sup>

Peripartum suctioning was examined from 2 perspectives: (1) suctioning of the airway in depressed neonates born through clear amniotic fluid and (2) tracheal suctioning in depressed neonates born through meconium-stained amniotic fluid.

##### *Suctioning of the upper airway*

##### *Consensus on science*

There is no evidence to support or refute suctioning of the mouth and nose of depressed neonates at birth when the infant is born through clear amniotic fluid. In healthy neonates suctioning of the mouth and nose is associated with cardiorespiratory complications (LOE 1<sup>21,22</sup>). In infants who are intubated, sedated, or paralyzed following resuscitation, tracheal suctioning in the absence of secretions may result in a decrease in oxygenation, an increase in cerebral blood flow and intracranial pressure, and a decrease in compliance (LOE 5<sup>23</sup>).

##### *Treatment recommendation*

Routine intrapartum oropharyngeal and nasopharyngeal suctioning for infants born with clear or meconium-stained amniotic fluid is no longer recommended.

##### *Tracheal suctioning*

##### *Consensus on science*

Depressed infants born through meconium-stained amniotic fluid are at increased risk of developing meconium aspiration syndrome (LOE 4<sup>24,25</sup>). Although these infants are at increased risk of developing meconium aspiration syndrome, the use of tracheal suctioning has not been associated with a reduction in the incidence of meconium aspiration syndrome or mortality (LOE 4<sup>26</sup>; LOE 5<sup>27</sup>). No randomised controlled studies have compared intubation and tracheal suctioning and no tracheal suctioning in depressed infants.

##### *Treatment recommendation*

The available evidence does not support or refute the routine tracheal suctioning of depressed infants born through meconium-stained amniotic fluid.

##### *Tracheal suctioning*

##### *Consensus on science*

Depressed infants born through meconium-stained amniotic fluid are at increased risk of developing meconium aspiration syndrome (LOE 4<sup>24,25</sup>). Although these infants are at increased risk of developing meconium aspiration syndrome, the use of tracheal suctioning has not been associated with a reduction in the incidence of meconium aspiration syndrome or mortality (LOE 4<sup>26</sup>; LOE 5<sup>27</sup>). No randomised controlled studies have compared intubation and tracheal suctioning and no tracheal suctioning in depressed infants.

##### *Treatment recommendation*

The available evidence does not support or refute the routine tracheal suctioning of depressed infants born through meconium-stained amniotic fluid.

## Ventilation strategies<sup>NRP-028A,NRP-028B</sup>

Ventilation strategies were examined from four perspectives: (1) characteristics of the initial assisted breaths and the role of positive end-expiratory pressure (PEEP), (2) continuous positive air pressure (CPAP) during or following resuscitation, (3) devices to assist ventilation, and (4) strategies when resources are limited.

### Initial breaths

#### *Consensus on science*

Both longer and shorter inspiratory times are in clinical use for initial ventilation in term infants, but there are no randomised controlled trials comparing these 2 approaches. In a small case series in term infants, a prolonged initial inflation of five seconds produced a twofold increase in functional residual capacity compared with historic controls (LOE 4<sup>28</sup>). A single randomised controlled trial in preterm infants of a 10-s sustained inflation followed by nasal CPAP compared with bag-mask ventilation demonstrated decreased need for intubation in the first 72 h, shorter duration of ventilatory support, and reduced bronchopulmonary dysplasia (LOE 1<sup>29</sup>). Two other randomised controlled trials failed to show a benefit from delivery room application of a sustained initial inflation followed by nasal CPAP (LOE 1<sup>30,31</sup>). Multiple variables among the three randomised controlled trials, including mode of intervention (nasopharyngeal tube versus face mask, T-piece versus self-inflating bag), as well as the use of CPAP in the delivery room make it difficult to determine the effect of the initial sustained inflation on establishing a functional residual capacity in very preterm infants.

### Pressure

There is no evidence to support the use of inflation pressures higher than those that are necessary to achieve improvement in heart rate or chest expansion. This can usually be achieved in term infants with an inflation pressure of 30 cm H<sub>2</sub>O (LOE 4<sup>28,32</sup>) and in preterm infants with pressures of 20–25 cm H<sub>2</sub>O (LOE 4<sup>33</sup>). Occasionally higher pressures are required (LOE 4<sup>34</sup>). In immature animals, ventilation at birth with high volumes associated with the generation of high peak inflation pressures for a few minutes causes lung injury, impaired gas exchange, and reduced lung compliance (LOE 5<sup>35</sup>).

### Positive end-expiratory pressure

There is no evidence to support or refute the value of PEEP during resuscitation of term infants. In preterm infants one small study did not show a benefit from PEEP during initial stabilization in reducing the number of infants who required intubation in the delivery room (LOE 1<sup>36</sup>). In studies of intubated immature animals the use of PEEP during initial stabilization after birth improved functional residual capacity, oxygenation, and lung compliance and reduced lung injury (LOE 5<sup>37,38</sup>), but high levels of PEEP (8–12 cm H<sub>2</sub>O) may reduce pulmonary blood flow and increase the risk of pneumothorax (LOE 5<sup>39,40</sup>).

#### *Treatment recommendation*

To establish initial lung inflation in apnoeic newborn infants, initiation of intermittent positive-pressure ventilation at birth can be accomplished with either shorter or longer inspiratory times. Initial peak inflating pressures necessary to achieve an increase in heart rate or movement of the chest are variable and unpredictable and should be individualised with each breath. If pressure is being monitored, an initial inflation pressure of 20 cm H<sub>2</sub>O may be effective

in preterm babies, but a pressure of 30–40 cm H<sub>2</sub>O may be necessary in some term babies. If pressure is not being monitored, the minimal inflation required to achieve an increase in heart rate should be used. Providers should avoid creation of excessive chest wall movement during ventilation of preterm infants immediately after birth.

Although measured peak inflation pressure does not correlate well with volume delivered in the context of changing respiratory mechanics, monitoring of inflation pressure may help provide consistent inflations and avoid unnecessarily high pressures. If positive-pressure ventilation is required, an initial inflation pressure of 20–25 cm H<sub>2</sub>O is adequate for most preterm infants. If prompt improvement in heart rate or chest movement is not obtained, then higher pressures to achieve effective ventilation may be needed. PEEP is likely to be beneficial during initial stabilization of apnoeic preterm infants who require positive-pressure ventilation and should be used if suitable equipment is available.

### Continuous positive airway pressure<sup>NRP-002A,NRP-002B</sup>

#### *Consensus on science*

For spontaneously breathing preterm infants at  $\geq 25$  weeks' gestation who have signs of respiratory distress, there is no significant difference between starting CPAP or intubation and mechanical ventilation in the delivery room when considering death or oxygen requirement at 36 weeks postmenstrual age. In spontaneously breathing infants at 25–28 weeks' gestation, CPAP compared with intubation reduced the rates of mechanical ventilation from 100% to 46% and surfactant use from 77% to 38% (LOE 1<sup>41</sup>). In the same trial infants on CPAP had a significantly increased rate of pneumothorax (9% versus 3%) (LOE 1<sup>41</sup>). There is no evidence to support or refute the use of CPAP in the term baby.

For very preterm infants, a multifaceted intervention, including PEEP, giving a sustained inflation and starting CPAP in the delivery room reduces the need for intubation and rate of mechanical ventilation within 72 h and reduces incidence of bronchopulmonary dysplasia compared with positive-pressure ventilation with a self-inflating bag via a face mask (LOE 1<sup>29</sup>). When compared with historic controls, use of delivery room CPAP for very premature infants was associated with a decrease in the requirement for intubation, days on mechanical ventilation, and use of postnatal steroids (LOE 4<sup>33</sup>), although a small underpowered feasibility trial of delivery room CPAP/PEEP versus no CPAP/PEEP did not show a significant difference in immediate outcomes (LOE 1<sup>36</sup>).

#### *Treatment recommendation*

Spontaneously breathing preterm infants who have respiratory distress may be supported with CPAP or intubation and mechanical ventilation. The most appropriate choice may be guided by local expertise and preferences.

### Assisted ventilation devices<sup>NRP-015A,NRP-015B,NRP-015C,NRP-017A,NRP-017B</sup>

#### *Consensus on science*

There are no clinical studies in newborns requiring positive pressure during resuscitation to support or refute the superiority of the T-piece resuscitator over bag-mask ventilation in improving outcome. In mechanical models target inflation pressures are delivered more consistently when using T-piece resuscitators than with self-inflating bags or flow-inflating bags (LOE 5<sup>42,43</sup>). In mechanical models PEEP is maintained more consistently with T-piece resuscitators compared with self-inflating bags or flow-inflating bags (LOE 5<sup>44</sup>). In mechanical models the ability to deliver a sustained inflation is better with either a T-piece resuscitator or flow-inflating bag than with a self-inflating bag (LOE 5<sup>42,45</sup>).

### Treatment recommendation

Ventilation of the newborn can be performed effectively with a flow-inflating bag, a self-inflating bag, or a pressure-limited T-piece resuscitator.

### Laryngeal mask airway<sup>NRP-017A,NRP-017B</sup>

#### Consensus on science

In one randomised controlled trial (LOE 1<sup>46</sup>) providers had similar success providing effective ventilation with either the laryngeal mask airway or face mask among newborns in the delivery room. In one retrospective cohort study (LOE 2<sup>47</sup>) and three large case series (LOE 4<sup>48</sup>) effective ventilation was achieved quickly using a laryngeal mask airway in newborns weighing >2000 g or delivered at  $\geq 34$  weeks' gestation. In one randomised controlled trial (LOE 1<sup>49</sup>) and one retrospective cohort study (LOE 2<sup>50</sup>) providers had similar success providing effective ventilation using either the laryngeal mask airway or tracheal tube among newborns in the delivery room. Although a single cohort study (LOE 2<sup>50</sup>) suggests that newborns resuscitated with a laryngeal mask may require less respiratory support after initial resuscitation, this conclusion is subject to significant selection bias. In multiple small case reports effective ventilation was achieved with a laryngeal mask airway when both face mask ventilation and tracheal intubation were unsuccessful. There is limited evidence to evaluate the effectiveness of the laryngeal mask airway for newborns weighing <2000 g, delivered at <34 weeks' gestation, in the setting of meconium-stained amniotic fluid, during chest compressions, or for administration of emergency intratracheal medications.

#### Treatment recommendation

The laryngeal mask airway should be considered during resuscitation of the newborn if face mask ventilation is unsuccessful and tracheal intubation is unsuccessful or not feasible. The laryngeal mask airway may be considered as an alternative to a face mask for positive-pressure ventilation among newborns weighing >2000 g or delivered at  $\geq 34$  weeks' gestation. There is limited evidence, however, to evaluate its use for newborns weighing <2000 g or delivered at <34 weeks' gestation. The laryngeal mask airway may be considered as an alternative to tracheal intubation as a secondary airway for resuscitation among newborns weighing >2000 g or delivered at  $\geq 34$  weeks' gestation. The laryngeal mask airway has not been evaluated in the setting of meconium-stained amniotic fluid, during chest compressions, or for administration of emergency intratracheal medications.

### Upper airway interface devices<sup>NRP-003A,NRP-003B</sup>

#### Consensus on science

Within classes of interfaces, reports conflict about the ability to maintain a seal with an anatomically shaped mask compared with a soft round mask (LOE 5<sup>51,52</sup>). Delivery of positive-pressure ventilation via nasal prongs has been shown to be superior to delivery via a triangular face mask for outcomes of chest compressions and intubation (LOE 2<sup>53</sup>). It is likely that differences in clinical outcomes that have been reported in several studies may be attributable to the targeted intervention (i.e., CPAP versus intermittent positive-pressure ventilation) rather than the interface. Nasal prongs may be a more effective device than face masks for providing respiratory support after birth (LOE 2<sup>53</sup>). There is insufficient evidence to support or refute the use of one type of mask over another for achieving clinical outcome, except that the Rendell-Baker style mask is sub-optimal in achieving an adequate seal when used for newborns (LOE 5<sup>54</sup>).

### Treatment recommendations

Nasal prongs are an alternative way of giving respiratory support. Whichever interface is used, providers should ensure that they are skilled in using the interface devices available at the institution. Different masks must be held in different ways to appropriately reduce leak.

### Exhaled air ventilation<sup>NRP-004A,NRP-004B</sup>

#### Consensus on science

Mouth-to-mouth ventilation is less effective than a self-inflating bag or tube and mask in improving survival rates in newborns with birth asphyxia (LOE 3<sup>55</sup>). Use of mouth-to-mask ventilation at 30 insufflations per minute is as effective as self-inflating bag-mask ventilation in increasing heart rate in the first 5 min after birth (LOE 2<sup>56</sup>). Mask-to-tube ventilation may cause infection in newborn infants (LOE 5<sup>57</sup>). Two studies (LOE 5<sup>58,59</sup>) demonstrated that tube-to-mask ventilation can be easily taught and acceptable breaths delivered. However, tube-to-mask ventilation was more difficult to use (LOE 5<sup>60</sup>; LOE 3<sup>55</sup>).

#### Treatment recommendation

Bag-mask ventilation is preferable to mouth-to-mask ventilation or tube-to-mask ventilation during neonatal resuscitation, but one of the latter two should be used when bag-mask devices are not available. Precautions must be taken because mouth-to-mask and mouth tube-to-mask ventilation are less comfortable and more tiring than bag-mask ventilation for the newborn at birth and may be associated with increased risk of infection in the infant and healthcare provider.

### Monitoring during and after intubation

#### Gas monitoring devices

##### Measurement of gas volume<sup>NRP-005A,NRP-005B,NRP-005C</sup>

#### Consensus of science

There are no studies that compare clinical outcomes in newborns after resuscitation with or without monitoring of gas volume. In preterm animal models the tidal volume used during initial ventilation after birth may alter subsequent lung function and induce inflammation, but other factors, including the use and level of PEEP, appear to interact with tidal volume in determining specific effects (LOE 5<sup>61,62</sup>). It is unclear whether the absolute tidal volumes used affected outcomes. Studies in manikins and animals (LOE 5<sup>63,64</sup>) suggest that providers cannot maintain constant pressures or assess delivered volume during manual ventilation. The position of the mask and degree of leak may be improved by the use of a volume monitor (LOE 5<sup>65</sup>).

#### Treatment recommendations

Ventilation during newborn resuscitation should aim to adequately inflate the lung while avoiding overinflation. There is insufficient evidence to recommend routine use of tidal-volume monitoring in neonates receiving positive-pressure ventilation during resuscitation.

##### Use of exhaled CO<sub>2</sub> detectors to confirm tracheal tube placement<sup>NRP-016A</sup>

#### Consensus on science

Studies (LOE 2<sup>66–68</sup>) suggest that detection of exhaled CO<sub>2</sub> confirms tracheal intubation in neonates with cardiac output more rapidly and accurately than clinical assessment alone. False-

negative readings have been reported during cardiac arrest (LOE 4<sup>69</sup>) despite models suggesting efficacy (LOE 5<sup>70</sup>). False-positive readings may occur with colorimetric devices contaminated with adrenaline (epinephrine), surfactant, and atropine (LOE 5<sup>71</sup>). Neonatal studies have excluded infants who need extensive resuscitation. There is no comparative information to recommend any one method for detection of exhaled CO<sub>2</sub> in the neonatal population.

#### *Treatment recommendation*

Detection of exhaled CO<sub>2</sub> in addition to clinical assessment is recommended as the most reliable method to confirm tracheal placement in neonates with spontaneous circulation.

#### *Colorimetric CO<sub>2</sub> detection to assess ventilation in nonintubated patients*<sup>NRP-018A,NRP-018B,NRP-018C</sup>

#### *Consensus on science*

The use of colorimetric exhaled CO<sub>2</sub> detectors during face mask ventilation of small numbers of preterm infants in the intensive care unit (LOE 4<sup>72</sup>) and the delivery room (LOE 4<sup>73</sup>) has been reported and may help identify airway obstruction. It is unclear whether the use of exhaled CO<sub>2</sub> detectors during bag-mask ventilation confers additional benefit over clinical assessment alone. No risks attributed to the use of exhaled CO<sub>2</sub> detectors have been identified. The use of exhaled CO<sub>2</sub> detectors with other interfaces (e.g., nasal airways, laryngeal masks) during positive-pressure ventilation in the delivery room has not been reported.

#### *Treatment recommendation*

There is insufficient evidence to recommend routine use of colorimetric exhaled CO<sub>2</sub> detectors during mask ventilation of newborns in the delivery room.

## **Circulatory support**

### **Chest compressions**<sup>NRP-006A,NRP-006B,NRP-007A,NRP-007B</sup>

#### *Consensus on science*

In animal studies of asphyxial models of cardiac arrest, piglets resuscitated with a combination of chest compressions and ventilations had better outcomes than those resuscitated with ventilations or compressions alone (LOE 5<sup>74,75</sup>). A further study in piglets suggested that sustained chest compressions had a deleterious effect on myocardial and cerebral perfusion, especially during prolonged resuscitation.<sup>76</sup>

A physiological mathematical modeling study suggested that using higher compression–ventilation ratios would result in under-ventilation of asphyxiated infants (LOE 5<sup>77</sup>). The model predicts that between three and five compressions to one ventilation should be most efficient for newborns.

Manikin studies confirm that the 3:1 compression–ventilation ratio provides more ventilations per minute when compared with higher ratios, but the resuscitation is perceived as being more physically taxing, especially when performed by a lone rescuer (LOE 5<sup>78,79</sup>). Adult manikin studies using two rescuers have shown that a 5:1 ratio provides better-quality chest compressions than a 15:2 ratio (LOE 5<sup>80</sup>) but can result in more missed ventilations per cycle (LOE 5<sup>81</sup>). A paediatric manikin study of mouth-to-mouth ventilation by a lone lay rescuer found equivalent minute ventilation for both the 15:2 and 5:1 ratios, but the 15:2 ratio produced more chest compressions per minute (LOE 5<sup>82</sup>). With two-rescuer CPR provided by nursing students, however, minute ventilation and compressions per minute were increased with the 5:1 ratio compared with the 10:2 and 15:2 ratios (LOE 5<sup>83</sup>). When the 15:2 ratio

was compared with the 30:2 ratio in a one-rescuer model of medical personnel using adolescent, child, and infant manikins, more compression cycles could be achieved with the 30:2 ratio on all manikins with no apparent effect on quality of compressions (LOE 5<sup>84</sup>). Effect on ventilation, however, was not assessed. One study in children suggested that CPR with rescue breathing is preferable to CPR alone when the arrest is of noncardiac aetiology (LOE 5<sup>85</sup>). There are no data regarding the optimum compression–ventilation ratios in neonates or neonatal models of primary cardiac versus predominantly asphyxial arrest.

Evidence from randomised studies in swine models (LOE 5<sup>86,87</sup>), manikin studies (LOE 5<sup>84,88</sup>), small case series (LOE 4<sup>89</sup>), and cadavers (LOE 5<sup>90</sup>) support the current practice of favouring the two thumb-encircling hands technique of chest compressions when compared with the two-finger technique. The former method produces higher blood pressure, can sustain a consistent quality of compressions for a longer time, and is perceived as easier and less tiring for the provider. One manikin study involving a variety of medical or quasimedical personnel (LOE 5<sup>91</sup>) found no difference in a number of qualitative measures between the two techniques other than significantly fewer compressions were judged as too shallow with the two-thumb technique. One small case series in newborns found higher systolic blood pressure generated with the two-finger technique when compared with the two-thumb-encircling hands technique (LOE 4<sup>92</sup>). Both techniques, however, generated comparable and adequate diastolic pressures, a more important determinant of coronary perfusion. Compressions should be centred over the lower third of the sternum rather than the mid-sternum (LOE 5<sup>93,94</sup>). Chest compression depth should favour one third the external anterior–posterior diameter of the chest rather than deeper compressions (LOE 5<sup>95</sup>).

#### *Treatment recommendation*

There is no evidence from quality human, animal, manikin, or mathematical modelling studies to warrant a change from the current compression–ventilation ratio of 3:1. Strategies should be considered for optimising the quality of compressions and ventilations with as few interruptions as possible. Because ventilation is critical to reversal of newborn asphyxial arrest, any higher ratio that decreases minute ventilation should be introduced with caution. If the arrest is known to be of cardiac aetiology, a higher compression–ventilation ratio should be considered (e.g., 15:2).

Chest compressions in the newborn should be delivered by the two-thumb-encircling hands method as the preferred option. Compressions should be centred over the lower third of the sternum and should compress the chest one-third the anterior–posterior diameter. Any chest compressions should be performed in combination with adequate inflation breaths.

## **Medications and fluid administration**

### **Adrenaline**

#### *Route and dose of adrenaline*<sup>NRP-008A,NRP-008B,NRP-009A,NRP-009B</sup>

#### *Consensus on science*

Despite the widespread use of adrenaline during resuscitation, no controlled clinical trials have directly compared tracheal and intravenous administration of adrenaline among neonates with a heart rate of <60 beats per minute despite adequate ventilation and chest compressions. Limited evidence from neonatal case series or case reports (LOE 4<sup>96,97</sup>) indicates that adrenaline administered by the tracheal route using a wide range of doses (0.003 mg kg<sup>-1</sup> to 0.25 mg kg<sup>-1</sup>) may result in return of spontaneous circulation (ROSC) or an increase in heart rate when intravenous access is not

available. These case series are limited by inconsistent standards for adrenaline administration and are subject to both selection and reporting bias.

Evidence from one case series using rigorously defined standards for adrenaline administration and outcomes reporting indicates that tracheal administration of adrenaline (0.01 mg/kg) is likely to be less effective than intravenous administration of the same dose (LOE 4<sup>2</sup>). This is consistent with evidence extrapolated from neonatal animal models indicating that higher doses (0.05–0.1 mg kg<sup>-1</sup>) of tracheal adrenaline may be required to achieve increased blood adrenaline concentrations and a haemodynamic response equivalent to intravenous administration (LOE 5<sup>98,99</sup>). Evidence extrapolated from adult animal models indicates that blood concentrations of adrenaline are significantly lower following tracheal administration (LOE 5<sup>100,101</sup>), and tracheal doses ranging from 0.05 mg kg<sup>-1</sup> to 0.1 mg kg<sup>-1</sup> may be required to achieve ROSC (LOE 5<sup>102</sup>).

Although it has been widely assumed that adrenaline can be administered faster by the tracheal route than by the intravenous route, no clinical trials have evaluated this hypothesis. Two studies have reported cases of inappropriate early use of tracheal adrenaline before airway and breathing are established (LOE 4<sup>96,97</sup>). One case series describing in-hospital paediatric cardiac arrest suggested that survival was higher among infants who received their first dose of adrenaline by the tracheal route; however, the time required for first dose administration using the tracheal and intravenous routes was not provided (LOE 5<sup>103</sup>).

Despite the widespread use of adrenaline during resuscitation, no controlled clinical trials have evaluated the ideal dose of adrenaline among neonates with a heart rate of <60 beats per minute despite adequate ventilation and chest compressions. Evidence extrapolated from paediatric studies that included infants <1 year of age (LOE 5<sup>104,105</sup>) indicate no benefit from intravenous adrenaline doses  $\geq 0.03$  mg/kg. This is in contrast to a single paediatric case series using historic controls that indicated a marked improvement in ROSC using high-dose intravenous adrenaline (0.1 mg kg<sup>-1</sup>) among children who had not responded to two doses of standard adrenaline (0.01 mg kg<sup>-1</sup>) (LOE 5<sup>106</sup>). Further extrapolative evidence from a meta-analysis of five adult clinical trials indicates that high-dose intravenous adrenaline may increase ROSC but offers no benefit in survival to hospital discharge (LOE 5<sup>107</sup>). Evidence from a planned secondary analysis of a paediatric randomised controlled trial suggests an increased risk of mortality among children receiving high-dose intravenous adrenaline (0.1 mg kg<sup>-1</sup>) (LOE 5<sup>104</sup>). Additional evidence from two paediatric animal studies (LOE 5<sup>108,109</sup>) indicates that intravenous adrenaline  $\geq 0.1$  mg kg<sup>-1</sup> increased risk of post-resuscitation mortality and interfered with cerebral cortical blood flow and cardiac output. There are no published studies comparing standard- and high-dose tracheal adrenaline in the neonatal population with hypoxic-hypercarbic arrest, and the ideal dose for tracheal administration is unknown. Data from neonatal case series and animal models suggest that higher doses (0.05–0.1 mg kg<sup>-1</sup>) of tracheal adrenaline may be required to achieve increased blood adrenaline concentrations and a haemodynamic response equivalent to intravenous administration (LOE 4<sup>2,96</sup>).

#### Treatment recommendation

If adequate ventilation and chest compressions have failed to increase the heart rate to >60 beats per minute, then it is reasonable to use adrenaline despite the lack of human neonatal data. If adrenaline is indicated, a dose of 0.01–0.03 mg kg<sup>-1</sup> should be administered *intravenously* as soon as possible. If adequate ventilation and chest compressions have failed to increase the heart rate to >60 beats per minute and intravenous access is *not* available, then it is reasonable to administer tracheal adrenaline.

If adrenaline is administered by the tracheal route, it is likely that a larger dose (0.05–0.1 mg kg<sup>-1</sup>) will be required to achieve an effect similar to that of the 0.01 mg kg<sup>-1</sup> intravenous dose. Higher intravenous doses cannot be recommended and may be harmful.

#### Volume expansion<sup>NRP-029A,NRP-029B,NRP-029C</sup>

##### Consensus on science

Multiple case series support the use of volume expansion in babies with a history of blood loss, including some who are unresponsive to chest compressions (LOE 4<sup>110</sup>). Many with pallor and tachycardia responded to volume expansion without having received chest compressions. In the absence of a history of blood loss there is limited evidence of benefit from administration of volume during resuscitation unresponsive to chest compressions/adrenaline (LOE 4<sup>111</sup>) and some suggestion of potential harm from animal studies (LOE 5<sup>112,113</sup>).

##### Treatment recommendation

Early volume replacement with crystalloid or red cells is indicated for babies with blood loss who are not responding to resuscitation. There is insufficient evidence to support the routine use of volume administration in the infant with no blood loss who is refractory to ventilation, chest compressions, and adrenaline. Because blood loss may be occult, a trial of volume administration may be considered in babies who do not respond to resuscitation.

#### Other drugs

Very rarely a narcotic antagonist (naloxone), sodium bicarbonate,<sup>NRP-021A,NRP-021B</sup> or vasopressors may be useful after resuscitation.

#### Naloxone<sup>NRP-022A,NRP-022B</sup>

##### Consensus on science

There are no data comparing naloxone with positive-pressure ventilation as the main intervention for opioid-exposed newborn infants who are apnoeic at birth. For newborns who are vigorous in the delivery room despite maternal use of opioids, naloxone subtly increases ventilation parameters (such as increased alveolar ventilation and improved CO<sub>2</sub> response curves) for a short time, but the clinical relevance of these observations is questionable (LOE 4<sup>114</sup>). Several other studies found no difference between vigorous treatment with naloxone and placebo or no drug treatment for newborns with outcomes of pH, Pco<sub>2</sub>, Apgar scores, and neurological outcomes (LOE 5<sup>115</sup>). Studies examining naloxone have consistently demonstrated that it is frequently misused (LOE 4<sup>116</sup>). Naloxone given to a baby born to an opioid-addicted mother has been associated with seizures (LOE 5<sup>117</sup>). There are concerns about short- and long-term safety of naloxone in neonates (LOE 5<sup>118</sup>). Naloxone is absorbed more effectively when given intravenously but has a shorter half-life compared with intramuscular administration.

##### Treatment recommendation

Naloxone is not recommended as part of the initial resuscitation for newborns with respiratory depression in the delivery room. For the clinical situation of a newborn with respiratory depression after maternal opiate exposure, the focus needs to remain on effective ventilation and airway support for the persistently apnoeic newborn.

**Vascular access**<sup>NRP-020A</sup>*Consensus on science*

Multiple clinical series and case reports suggest that fluids and medications can be successfully delivered by the intraosseous route during resuscitation of neonates when equipment or personnel skilled in establishing venous access are not available or if other vascular access sites (especially intravenous) cannot be successfully established within several minutes (LOE 4<sup>119,120</sup>).

*Treatment recommendation*

Temporary intraosseous access to provide fluids and medications to resuscitate critically ill neonates may be indicated following unsuccessful attempts to establish intravenous vascular access or when caregivers are more skilled at securing intraosseous access.

**Supportive therapy****Temperature control***Maintenance of body temperature*<sup>NRP-023A</sup>*Consensus on science*

A large body of evidence supports the wrapping of newborn infants of <28 weeks' gestation in polythene wraps or bags at birth without drying to reduce heat loss (LOE 1<sup>121,122</sup>). Some of these infants were hyperthermic on admission to the neonatal intensive care unit, but it is unclear whether this is because they were born hot or because they became overheated during stabilization and transfer. In the absence of polythene wrapping, use of exothermic mattresses maintained the temperature of newborn infants weighing <1500 g within the normal range (LOE 2<sup>123</sup>). A combination of exothermic mattresses and polythene wrapping during resuscitation is the most effective strategy to avoid hypothermia but may increase the risk of hyperthermia (LOE 3<sup>124</sup>). Delivery room temperatures of at least 26 °C for newborns at <28 weeks' gestation in combination with polythene wraps or bags maintained temperatures most effectively (LOE 4<sup>125</sup>; LOE 3<sup>126</sup>).

*Treatment recommendation*

Newborn infants of <28 weeks' gestation should be completely covered in a polythene wrap or bag up to their necks without drying immediately after birth and then placed under a radiant heater and resuscitated or stabilised in a standard fashion. Infants should be kept wrapped until admission and temperature check. Hyperthermia should be avoided. Delivery room temperatures should be at least 26 °C for infants of <28 weeks' gestation.

**Postresuscitation management****Temperature***Hyperthermia*<sup>NRP-031A,NRP-031B</sup>*Consensus on science*

Infants born to febrile mothers have been reported to have a higher incidence of perinatal respiratory depression, neonatal seizures, cerebral palsy, and increased risk of mortality (LOE 4<sup>127,128</sup>). There is no evidence to determine whether the fever or the cause of the fever increases the risk to the baby. In one study, neonatal fever at birth resolved spontaneously within 60 min (LOE 4<sup>129</sup>). Adult animal trials show decreased central nervous system injury with antipyretic therapy for hyperthermia (LOE 5<sup>130</sup>). In a randomised study high-dose corticosteroids lowered mater-

nal temperature but were associated with an increased number of cases of asymptomatic bacteraemia in neonates (LOE 2<sup>131</sup>).

*Treatment recommendation*

There is insufficient evidence to support or refute the routine use of interventions to lower maternal fever to reduce neonatal morbidity and mortality. There should be an increased awareness that the presence of maternal hyperthermia may lead to a need for neonatal resuscitation. The goal is to achieve normothermia and avoid iatrogenic hyperthermia.

*Therapeutic hypothermia*<sup>NRP-024A,NRP-024B</sup>*Consensus on science*

A large body of evidence from three large randomised studies (LOE 1<sup>132-134</sup>) and two small randomised trials (LOE 1<sup>135,136</sup>) demonstrated that induced hypothermia (33.5–34.5 °C) implemented within 6 h of birth in term infants at highest risk for brain injury (as defined by specific protocols) and with further treatment in neonatal intensive care units is associated with significantly fewer deaths and less neurodevelopmental disability at 18-month follow-up. The number needed to treat is nine.<sup>137</sup> Both cooling methods (systemic versus selective head cooling) were shown to be effective, but none of the studies compared them directly. The randomised trials produced remarkably consistent results despite using different methods of cooling.<sup>138</sup>

*Treatment recommendations*

Newly born infants born at or near-term with evolving moderate to severe hypoxic–ischaemic encephalopathy should be offered therapeutic hypothermia. Whole body cooling and selective head cooling are both appropriate strategies. Cooling should be initiated and conducted under clearly defined protocols with treatment in neonatal intensive care facilities and with the capability for multidisciplinary care. Treatment should be consistent with the protocols used in the randomised clinical trials (i.e., begin within 6 h of birth, continue for 72 h after birth, and rewarm over at least 4 h). Carefully monitor for known adverse effects of cooling, e.g., thrombocytopenia and hypotension. All treated infants should be followed up longitudinally.

**General supportive care***Glucose*<sup>NRP-019A,NRP-019B</sup>*Consensus on science*

Newborns with lower blood glucose levels have a higher incidence of brain injury and adverse outcomes after a hypoxic–ischaemic insult, although no specific level associated with worse outcome has been identified (LOE 4<sup>139</sup>; LOE 3<sup>140</sup>). Increased glucose levels after hypoxia–ischaemia do not appear to have adverse effects in studies of children (LOE 5<sup>141</sup>) or in animal studies (LOE 5<sup>142</sup>) and may be protective (LOE 5<sup>143</sup>). However, no randomised controlled trials have examined this question. Due to the paucity of data, no specific target glucose concentration range can be identified at present.

*Treatment recommendation*

Intravenous glucose infusion should be considered as soon as practical after resuscitation, with the goal of avoiding hypoglycaemia.

## Timing of cord clamping<sup>NRP-030A,NRP-030B,NRP-030C,NRP-030D</sup>

### Consensus on science

For the uncomplicated birth at term there is evidence of a benefit to delaying cord clamping for a minimum time ranging from 1 min until the cord stops pulsating after delivery. Those with delayed clamping had improved iron status through early infancy but were more likely to receive phototherapy (LOE 1<sup>144</sup>). For an otherwise uncomplicated preterm birth, there is evidence of a benefit to delaying cord clamping for a minimum time ranging from 30 s to 3 min after delivery. Those who experienced delayed clamping in this group had higher blood pressures during stabilization and a lower incidence of intraventricular haemorrhage (LOE 1<sup>145</sup>) and received fewer blood transfusions<sup>145</sup> but were more likely to receive phototherapy (LOE 2<sup>144</sup>). There are limited data on the hazards or benefits of delayed cord clamping in the nonvigorous infant.<sup>146,147</sup>

### Treatment recommendation

Delay in umbilical cord clamping for at least 1 min is recommended for newborn infants not requiring resuscitation. There is insufficient evidence to support or refute a recommendation to delay cord clamping in babies requiring resuscitation.

## Withholding or discontinuing resuscitative efforts<sup>NRP-025A,NRP-025B,NRP-025C,NRP-026A,NRP-026B,NRP-026C,NRP-027A,NRP-027B</sup>

### Noninitiation of resuscitation

#### Consensus on science

For neonates at the margins of viability or those with conditions which predict a high risk of mortality or morbidity, attitudes and practice vary according to region and availability of resources (LOE 4<sup>148</sup>). Social science studies indicate that parents would like a larger role in the decisions to start resuscitation and continue life support of severely compromised newborns. Opinions among neonatal providers vary widely regarding the benefits and disadvantages of aggressive therapies in such newborns (LOE 4<sup>149,150</sup>). Some data are available to help identify conditions associated with high mortality and poor outcome (LOE 4<sup>151,152</sup>). Such conditions may include extreme prematurity and anomalies that predict extreme morbidity or early death. Treatment and outcome of infants at the margins of viability may be influenced by factors in addition to gestational age and birthweight.<sup>153</sup> Noninitiation of resuscitation and withdrawal of cardiorespiratory support are ethically equivalent.<sup>154</sup>

#### Treatment recommendation

When gestation, birth weight, or congenital anomalies are associated with almost certain early death and an unacceptably high morbidity is likely among the rare survivors, resuscitation is not indicated. In conditions associated with a high rate of survival and acceptable morbidity, resuscitation is nearly always indicated. In conditions associated with uncertain prognosis, when there is borderline survival and a relatively high rate of morbidity and when the burden to the child is high, the parents' views on resuscitation should be supported. There should be a consistent and coordinated approach from the obstetric and neonatal teams in applying these guidelines and in communicating with the parents in developing an agreed-upon management plan when possible. Once resuscitation is initiated it may be appropriate to subsequently decide to discontinue cardiorespiratory support and offer comfort care.

## Discontinuation of resuscitation

### Consensus on science

Available evidence, albeit from relatively small numbers of babies, suggests that babies born without a heart rate that has not returned by 10 min of age are likely to either die or have severe neurological disability (LOE 4<sup>155,156</sup>). It is not known whether there was significant selection bias in many of these studies, nor indeed that the babies included in these studies did receive "good-quality resuscitation." One study with a large contemporary cohort of infants (some randomised to postresuscitation hypothermia) indicates that in babies born without a detectable heart rate, the lack of ROSC after 10 min of age is associated with survival without severe neurological deficit in a small number of the survivors (LOE 4<sup>157</sup>). Data are not available regarding the number of infants who were deemed too sick for study entry or who died before enrollment. These factors may have resulted in a significant overestimation of the rate of intact survival among infants with an Apgar score of 0 at 10 min. In all reported series the cause of the asphyxia and the efficacy of the resuscitation process were not elucidated.

The evidence from seven LOE 5 studies<sup>157,158</sup> is insufficient to support or refute any recommendation regarding how much time should elapse with a heart rate of <60 but >0 beats per minute before discontinuing resuscitative efforts.

### Treatment recommendation

In a newly born baby with no detectable heart rate which remains undetectable for 10 min, it is appropriate to then consider stopping resuscitation. The decision to continue resuscitation efforts when the infant has a heart rate of zero for longer than 10 min is often complex and may be influenced by issues such as the presumed aetiology of the arrest, gestation of the baby, potential reversibility of the situation, and the parents' previously expressed feelings about acceptable risk of morbidity.

The evidence of outcome when the heart rate is <60 beats per minute at birth and persists after 10 or 15 min of continuous and adequate resuscitative efforts at delivery is insufficient to guide decisions as to whether to withhold or to continue resuscitation.

## Personnel needs at elective caesarean sections<sup>NRP-010A,NRP-010B,NRP-010C</sup>

### Consensus on science

Retrospective studies show that delivery by Caesarean section at term under regional anaesthesia is associated with a small increase in risk of receiving bag-mask ventilation during neonatal resuscitation compared with unassisted vaginal birth. The number needed to treat equals 35 (LOE 4<sup>159,160</sup>). Five retrospective studies showed that delivery by Caesarean section at term under regional anaesthesia did not increase the risk of requirement for intubation during neonatal resuscitation compared with unassisted vaginal birth (LOE 4<sup>161,162</sup>). There is no evidence addressing this question in babies born at 34–36 weeks' gestation.

### Treatment recommendations

When an infant without antenatally identified risk factors is delivered at term by Caesarean section under regional anaesthesia, a provider capable of performing bag-mask ventilation should be present at the delivery. It is not necessary for a provider skilled in neonatal intubation to be present at that delivery.

## Educational techniques for teaching, assessing, and maintaining resuscitation knowledge and skills

### Simulation<sup>NRP-032A,NRP-032B,NRP-032C,EIT-019A,EIT-019B</sup>

#### *Consensus on science*

There is a lack of uniformity in the definition of simulation as a learning methodology, determination of relevant outcomes, and use of appropriate measurement tools. Use of simulation as an adjunct to traditional education methodologies may enhance performance of healthcare professionals in actual clinical settings (LOE 1<sup>163</sup>; LOE 3<sup>164</sup>) and simulated resuscitations (LOE 1<sup>165</sup>; LOE 2<sup>166</sup>). Some studies did not show any difference in performance between standard training and simulation training in a clinical setting (LOE 1<sup>167</sup>) or using other means of evaluation (LOE 1<sup>168</sup>). No studies were found that revealed simulation-based training produced inferior results compared with traditional methodologies.

#### *Treatment recommendations*

Simulation should be used as a methodology in resuscitation education. The most effective interventions and evaluation methodologies remain to be defined.

### Briefings and debriefings<sup>NRP-033A,NRP-033B,EIT-001A,EIT-001B</sup>

#### *Consensus on science*

Evidence from one prospective randomised controlled study (LOE 1<sup>169</sup>) and 17 other studies (LOE 3–4) of briefings and

debriefings document improvement in the acquisition of content knowledge, technical skills, or behavioral skills required for effective and safe resuscitation. Only a single study (LOE 4<sup>170</sup>) revealed no effect of briefing/debriefing on performance, and no studies indicated that the use of briefings and debriefings had any negative effects.

#### *Treatment recommendations*

It is reasonable to recommend the use of briefings and debriefings during learning activities while caring for simulated patients and during clinical activities.

## Acknowledgments

We thank the following individuals for their collaborations on the worksheets contained in this chapter: Dianne Atkins; Khalid Aziz; David Boyle; Steve Byrne; Peter Davis; Jordan Duval-Arnould; Dana Edelson; William A. Engle; Marilyn B. Escobedo; Maria Fernanda de Almeida; David Field; Judith Finn; Jay Goldsmith; Ruth Guinsburg; Louis Halamek; Elizabeth Hunt; John Kattwinkel; Jane McGowan; Douglas D. McMillan; Lindsay Mildenhall; Rintaro Mori; Colin Morley; Susan Niermeyer; Colm O'Donnell; Jeffrey Perlman; Yacov Rabi; Sam Richmond; Steven A. Ringer; Nalini Singhal; Jasmeet Soar; Benjamin J. Stenson; Edgardo Szyld; Masanori Tamura; Enrique Udaeta; Sithembiso Velaphi; Dharmapuri Vidyasagar; Michael Watkinson; Gary Weiner; Myra H. Wyckoff; Jonathan Wyllie; and Trevor Yuen.

## Appendix A. Evidence-based worksheets for part 11: neonatal resuscitation: 2010 International Consensus on Cardiopulmonary Resuscitation and Emergency Cardiovascular Care Science with Treatment Recommendations

Task force	WS ID	PICO title	Short title	Authors	URL
EIT	EIT-001A	For resuscitation teams (P), do briefings/debriefings (I), when compared to no briefings/debriefings (C), improve performance or outcomes (O)? (INTERVENTION)	Debriefing of CPR performance	Dana Edelson, Trevor Yuen	<a href="http://www.resuscitationjournal.com/article/PIIS0300957210004557/attachment?filename=mmc2.pdf">http://www.resuscitationjournal.com/article/PIIS0300957210004557/attachment?filename=mmc2.pdf</a>
EIT	EIT-001B	For resuscitation teams (P), do briefings/debriefings (I), when compared to no briefings/debriefings (C), improve performance or outcomes (O)? (INTERVENTION)	Debriefing of CPR performance	Jasmeet Soar	<a href="http://www.resuscitationjournal.com/article/PIIS0300957210004557/attachment?filename=mmc3.pdf">http://www.resuscitationjournal.com/article/PIIS0300957210004557/attachment?filename=mmc3.pdf</a>
EIT	EIT-019A	In participants undergoing BLS/ALS courses (P), does the inclusion of more realistic techniques (e.g., high fidelity manikins, in situ training) (I), as opposed to standard training (e.g., low fidelity, education centre) (C), improve outcomes (e.g., skills performance on manikins, skills performance in real arrests, willingness to perform, etc.) (O)?	High fidelity training	Jordan Duval-Arnould, Elizabeth Hunt	<a href="http://www.resuscitationjournal.com/article/PIIS0300957210004557/attachment?filename=mmc4.pdf">http://www.resuscitationjournal.com/article/PIIS0300957210004557/attachment?filename=mmc4.pdf</a>
EIT	EIT-019B	In participants undergoing BLS/ALS courses (P), does the inclusion of more realistic techniques (e.g., high fidelity manikins, in situ training) (I), as opposed to standard training (e.g., low fidelity, education centre) (C), improve outcomes (e.g., skills performance on manikins, skills performance in real arrests, willingness to perform, etc.) (O)?	High fidelity training	Judith Finn	<a href="http://www.resuscitationjournal.com/article/PIIS0300957210004557/attachment?filename=mmc5.pdf">http://www.resuscitationjournal.com/article/PIIS0300957210004557/attachment?filename=mmc5.pdf</a>
NRP	NRP-001A	For neonates requiring resuscitation (P), is any adjunct measure (e.g., CO <sub>2</sub> detection, pulse oximeter) as effective as the usual clinical findings (e.g., heart rate, chest movement) effective to improve outcome (O)?	Adjuncts: CO <sub>2</sub> detection, pulse oximeter	John Kattwinkel	<a href="http://www.resuscitationjournal.com/article/PIIS0300957210004557/attachment?filename=mmc6.pdf">http://www.resuscitationjournal.com/article/PIIS0300957210004557/attachment?filename=mmc6.pdf</a>
NRP	NRP-001B	For neonates requiring resuscitation (P), is any adjunct measure (e.g., CO <sub>2</sub> detection, pulse oximeter) as effective as the usual clinical findings (e.g., heart rate, chest movement) effective to improve outcome (O)?	Adjuncts: CO <sub>2</sub> detection, pulse oximeter	Yacov Rabi	<a href="http://www.resuscitationjournal.com/article/PIIS0300957210004557/attachment?filename=mmc7.pdf">http://www.resuscitationjournal.com/article/PIIS0300957210004557/attachment?filename=mmc7.pdf</a>
NRP	NRP-002A	In the neonates infant (preterm and term) receiving respiratory support (P), does the use of CPAP (I) versus no-CPAP or IPPV (C) improve outcome – specify (O)?	CPAP and IPPV	Colm O'Donnell	<a href="http://www.resuscitationjournal.com/article/PIIS0300957210004557/attachment?filename=mmc8.pdf">http://www.resuscitationjournal.com/article/PIIS0300957210004557/attachment?filename=mmc8.pdf</a>
NRP	NRP-002B	In the neonates infant (preterm and term) receiving respiratory support (P), does the use of CPAP (I) versus no-CPAP or IPPV (C) improve outcome – specify (O)?	CPAP and IPPV	Douglas McMillan	<a href="http://www.resuscitationjournal.com/article/PIIS0300957210004557/attachment?filename=mmc9.pdf">http://www.resuscitationjournal.com/article/PIIS0300957210004557/attachment?filename=mmc9.pdf</a>
NRP	NRP-003A	In neonates receiving respiratory support (P) does the use of face mask interface (I) versus CPAP, NPCPAP, NC (C) (excluding intubation improve outcome) (O)?	Face mask interface versus CPAP etc	Colin Morley	<a href="http://www.resuscitationjournal.com/article/PIIS0300957210004557/attachment?filename=mmc10.pdf">http://www.resuscitationjournal.com/article/PIIS0300957210004557/attachment?filename=mmc10.pdf</a>

## Appendix A (Continued)

Task force	WS ID	PICO title	Short title	Authors	URL
NRP	NRP-003B	In neonates receiving respiratory support (P) does the use of face mask interface (I) versus CPAP, NPCPAP, NC (C) (excluding intubation) improve outcome (O)?	Face mask interface versus CPAP etc	Yacov Rabi	<a href="http://www.resuscitationjournal.com/article/PIIS0300957210004557/attachment?filename=mmc11.pdf">http://www.resuscitationjournal.com/article/PIIS0300957210004557/attachment?filename=mmc11.pdf</a>
NRP	NRP-004A	In neonates receiving resuscitation (P) does the use of mouth-to-mouth, mouth-to-mask, mouth tube to mask (I) as compared to a self-inflating bag (C) give equivalent outcomes (stable spontaneous breathing) (O), when devices for delivering PPV are not available?	Self-inflating bag versus mouth techniques	Nalini Singhal	<a href="http://www.resuscitationjournal.com/article/PIIS0300957210004557/attachment?filename=mmc12.pdf">http://www.resuscitationjournal.com/article/PIIS0300957210004557/attachment?filename=mmc12.pdf</a>
NRP	NRP-004B	In neonates receiving resuscitation (P) does the use of mouth-to-mouth, mouth-to-mask, mouth tube to mask (I) as compared to a self-inflating bag (C) give equivalent outcomes (stable spontaneous breathing) (O), when devices for delivering PPV are not available?	Self-inflating bag versus mouth techniques	Maria Fernanda de Almeida	<a href="http://www.resuscitationjournal.com/article/PIIS0300957210004557/attachment?filename=mmc13.pdf">http://www.resuscitationjournal.com/article/PIIS0300957210004557/attachment?filename=mmc13.pdf</a>
NRP	NRP-005A	In neonates receiving positive pressure ventilation (P) does the use of gas volume monitoring (I) versus clinical assessment with or without pressure monitoring (C) improve clinical outcome (O)?	Ventilation volume monitoring	Steven Ringer	<a href="http://www.resuscitationjournal.com/article/PIIS0300957210004557/attachment?filename=mmc14.pdf">http://www.resuscitationjournal.com/article/PIIS0300957210004557/attachment?filename=mmc14.pdf</a>
NRP	NRP-005B	In neonates receiving positive pressure ventilation (P) does the use of gas volume monitoring (I) versus clinical assessment with or without pressure monitoring (C) improve clinical outcome (O)?	Ventilation volume monitoring	Khalid Aziz	<a href="http://www.resuscitationjournal.com/article/PIIS0300957210004557/attachment?filename=mmc15.pdf">http://www.resuscitationjournal.com/article/PIIS0300957210004557/attachment?filename=mmc15.pdf</a>
NRP	NRP-005C	In neonates receiving positive pressure ventilation (P) does the use of gas volume monitoring (I) versus clinical assessment with or without pressure monitoring (C) improve clinical outcome (O)?	Ventilation volume monitoring	Jane McGowan	<a href="http://www.resuscitationjournal.com/article/PIIS0300957210004557/attachment?filename=mmc16.pdf">http://www.resuscitationjournal.com/article/PIIS0300957210004557/attachment?filename=mmc16.pdf</a>
NRP	NRP-006A	In neonates receiving chest compressions (P) do other ratios (5:1, 15:2) (I) versus a 3:1 (C) improve outcomes (O)?	Compression ventilation ratio	Lindsay Mildenhall	<a href="http://www.resuscitationjournal.com/article/PIIS0300957210004557/attachment?filename=mmc17.pdf">http://www.resuscitationjournal.com/article/PIIS0300957210004557/attachment?filename=mmc17.pdf</a>
NRP	NRP-006B	In neonates receiving chest compressions (P) do other ratios (5:1, 15:2) (I) versus a 3:1 (C) improve outcomes (O)?	Compression ventilation ratio	Myra Wyckoff	<a href="http://www.resuscitationjournal.com/article/PIIS0300957210004557/attachment?filename=mmc18.pdf">http://www.resuscitationjournal.com/article/PIIS0300957210004557/attachment?filename=mmc18.pdf</a>
NRP	NRP-007A	In neonates (P) receiving chest compressions does the two thumb (I) versus two finger (C) method of administration improve outcome (O)?	Two thumb versus two finger	Lindsay Mildenhall	<a href="http://www.resuscitationjournal.com/article/PIIS0300957210004557/attachment?filename=mmc19.pdf">http://www.resuscitationjournal.com/article/PIIS0300957210004557/attachment?filename=mmc19.pdf</a>
NRP	NRP-007B	In neonates (P) receiving chest compressions does the two thumb (I) versus two finger (C) method of administration improve outcome (O)?	Two thumb versus two finger	Myra Wyckoff	<a href="http://www.resuscitationjournal.com/article/PIIS0300957210004557/attachment?filename=mmc20.pdf">http://www.resuscitationjournal.com/article/PIIS0300957210004557/attachment?filename=mmc20.pdf</a>
NRP	NRP-008A	Among neonates (<=28 days) with a HR <60 bpm despite adequate ventilation and chest compressions, does the IV route compared with the ET route of adrenaline administration: 1. increase heart rate >100 bpm faster, 2. increase ROSC, or 3. increase survival to discharge?	IV versus ET adrenaline	Jonathan Wyllie	<a href="http://www.resuscitationjournal.com/article/PIIS0300957210004557/attachment?filename=mmc21.pdf">http://www.resuscitationjournal.com/article/PIIS0300957210004557/attachment?filename=mmc21.pdf</a>

## Appendix A (Continued)

Task force	WS ID	PICO title	Short title	Authors	URL
NRP	NRP-008B	Among neonates (<=28 days) with a HR <60 bpm despite adequate ventilation and chest compressions, does the IV route compared with the ET route of adrenaline administration: 1. increase heart rate >100 bpm faster, 2. increase ROSC, or 3. increase survival to discharge?	IV versus ET adrenaline	Gary Weiner	<a href="http://www.resuscitationjournal.com/article/PIIS0300957210004557/attachment?filename=mmc22.pdf">http://www.resuscitationjournal.com/article/PIIS0300957210004557/attachment?filename=mmc22.pdf</a>
NRP	NRP-009A	Among neonates (<=28 days) with HR <60 bpm does HDE (IV >0.03 mg/kg or ET >0.1 mg/kg) compared with SDE: 1. increase HR >100 bpm faster, 2. increase ROSC, or 3. increase survival to discharge?	Adrenaline dose	Jonathan Wyllie	<a href="http://www.resuscitationjournal.com/article/PIIS0300957210004557/attachment?filename=mmc23.pdf">http://www.resuscitationjournal.com/article/PIIS0300957210004557/attachment?filename=mmc23.pdf</a>
NRP	NRP-009B	Among neonates (<=28 days) with HR <60 bpm does HDE (IV >0.03 mg/kg or ET >0.1 mg/kg) compared with SDE: 1. increase HR >100 bpm faster, 2. increase ROSC, or 3. increase survival to discharge?	Adrenaline dose	Gary Weiner	<a href="http://www.resuscitationjournal.com/article/PIIS0300957210004557/attachment?filename=mmc24.pdf">http://www.resuscitationjournal.com/article/PIIS0300957210004557/attachment?filename=mmc24.pdf</a>
NRP	NRP-010A	For infants delivered at >=34 weeks gestation (P), is delivery by elective c-section under regional anaesthesia (I) in comparison with unassisted vertex vaginal deliveries (C) associated with an increased risk of requirement for intubation during resuscitation (O)?	Prenatal prediction of respiratory compromise	Marilyn B. Escobedo	<a href="http://www.resuscitationjournal.com/article/PIIS0300957210004557/attachment?filename=mmc25.pdf">http://www.resuscitationjournal.com/article/PIIS0300957210004557/attachment?filename=mmc25.pdf</a>
NRP	NRP-010B	For infants delivered at >=34 weeks gestation (P), is delivery by elective c-section under regional anaesthesia (I) in comparison with unassisted vertex vaginal deliveries (C) associated with an increased risk of requirement for intubation during resuscitation (O)?	Prenatal prediction of respiratory compromise	Ben Stenson	<a href="http://www.resuscitationjournal.com/article/PIIS0300957210004557/attachment?filename=mmc26.pdf">http://www.resuscitationjournal.com/article/PIIS0300957210004557/attachment?filename=mmc26.pdf</a>
NRP	NRP-010C	For infants delivered at >=34 weeks gestation (P), is delivery by elective c-section under regional anaesthesia (I) in comparison with unassisted vertex vaginal deliveries (C) associated with an increased risk of requirement for intubation during resuscitation (O)?	Prenatal prediction of respiratory compromise	Dianne Atkins, Edgardo Szyld	<a href="http://www.resuscitationjournal.com/article/PIIS0300957210004557/attachment?filename=mmc27.pdf">http://www.resuscitationjournal.com/article/PIIS0300957210004557/attachment?filename=mmc27.pdf</a>
NRP	NRP-011A	In depressed neonates with clear amniotic fluid (P) does suctioning of the mouth and nose (I) versus none (C) improve outcome (O)?	Clear amniotic fluid	Sithembiso Velaphi, Dharmapuri Vidyasagar	<a href="http://www.resuscitationjournal.com/article/PIIS0300957210004557/attachment?filename=mmc28.pdf">http://www.resuscitationjournal.com/article/PIIS0300957210004557/attachment?filename=mmc28.pdf</a>
NRP	NRP-012A	In depressed neonates born through meconium stained amniotic fluid (P), does tracheal suctioning (I) versus no suctioning (C) improve outcome (O)?	Stained amniotic fluid	Sithembiso Velaphi, Dharmapuri Vidyasagar	<a href="http://www.resuscitationjournal.com/article/PIIS0300957210004557/attachment?filename=mmc29.pdf">http://www.resuscitationjournal.com/article/PIIS0300957210004557/attachment?filename=mmc29.pdf</a>
NRP	NRP-013A	When resuscitating or stabilizing newborns at birth (P), is there an oxygen administration strategy (I) that is superior to any other (C) in improving outcome (O)?	Oxygen administration	Jay Goldsmith	<a href="http://www.resuscitationjournal.com/article/PIIS0300957210004557/attachment?filename=mmc30.pdf">http://www.resuscitationjournal.com/article/PIIS0300957210004557/attachment?filename=mmc30.pdf</a>
NRP	NRP-013B	When resuscitating or stabilizing newborns at birth (P), is there an oxygen administration strategy (I) that is superior to any other (C) in improving outcome (O)?	Oxygen administration	Sam Richmond	<a href="http://www.resuscitationjournal.com/article/PIIS0300957210004557/attachment?filename=mmc31.pdf">http://www.resuscitationjournal.com/article/PIIS0300957210004557/attachment?filename=mmc31.pdf</a>

## Appendix A (Continued)

Task force	WS ID	PICO title	Short title	Authors	URL
NRP	NRP-014A	In neonates receiving resuscitation or stabilization (P), is the saturation demonstrated during normal birth (I) preferable to some other target (C), when considering outcome for premature and term neonates (O)?	Oxygen saturation target	John Kattwinkel	<a href="http://www.resuscitationjournal.com/article/PIIS0300957210004557/attachment?filename=mmc32.pdf">http://www.resuscitationjournal.com/article/PIIS0300957210004557/attachment?filename=mmc32.pdf</a>
NRP	NRP-014B	In neonates receiving resuscitation or stabilization (P), is the saturation demonstrated during normal birth (I) preferable to some other target (C), when considering outcome for premature and term neonates (O)?	Oxygen saturation target	Colin Morley	<a href="http://www.resuscitationjournal.com/article/PIIS0300957210004557/attachment?filename=mmc33.pdf">http://www.resuscitationjournal.com/article/PIIS0300957210004557/attachment?filename=mmc33.pdf</a>
NRP	NRP-015A	In neonates (P) receiving positive pressure during resuscitation, is positive pressure ventilation by T-piece resuscitator (I) superior to bag ventilation (C) for improving outcome – specify (O)?	T-piece resuscitator	David Boyle	<a href="http://www.resuscitationjournal.com/article/PIIS0300957210004557/attachment?filename=mmc34.pdf">http://www.resuscitationjournal.com/article/PIIS0300957210004557/attachment?filename=mmc34.pdf</a>
NRP	NRP-015B	In neonates (P) receiving positive pressure during resuscitation, is positive pressure ventilation by T-piece resuscitator (I) superior to bag ventilation (C) for improving outcome – specify (O)?	T-piece resuscitator	Ben Stenson	<a href="http://www.resuscitationjournal.com/article/PIIS0300957210004557/attachment?filename=mmc35.pdf">http://www.resuscitationjournal.com/article/PIIS0300957210004557/attachment?filename=mmc35.pdf</a>
NRP	NRP-015C	In neonates (P) receiving positive pressure during resuscitation, is positive pressure ventilation by T-piece resuscitator (I) superior to bag ventilation (C) for improving outcome – specify (O)?	T-piece resuscitator	David Field	<a href="http://www.resuscitationjournal.com/article/PIIS0300957210004557/attachment?filename=mmc36.pdf">http://www.resuscitationjournal.com/article/PIIS0300957210004557/attachment?filename=mmc36.pdf</a>
NRP	NRP-016A	For neonates (P) following attempted tracheal intubation, is CO <sub>2</sub> detection (I) superior to clinical assessment (C) for confirming tracheal location (O)?	CO <sub>2</sub> detection	Jonathan Wyllie	<a href="http://www.resuscitationjournal.com/article/PIIS0300957210004557/attachment?filename=mmc37.pdf">http://www.resuscitationjournal.com/article/PIIS0300957210004557/attachment?filename=mmc37.pdf</a>
NRP	NRP-017A	For neonates requiring positive pressure ventilation (P), is LMA (I) an effective alternative to mask or tracheal ventilation (C) for improving outcome (O)? (achieving stable vital signs and reducing the need for subsequent tracheal intubation)?	LMA	Gary Weiner	<a href="http://www.resuscitationjournal.com/article/PIIS0300957210004557/attachment?filename=mmc38.pdf">http://www.resuscitationjournal.com/article/PIIS0300957210004557/attachment?filename=mmc38.pdf</a>
NRP	NRP-017B	For neonates requiring positive pressure ventilation (P), is LMA (I) an effective alternative to mask or tracheal ventilation (C) for improving outcome (O)? (achieving stable vital signs and reducing the need for subsequent tracheal intubation)?	LMA	Enrique Udaeta	<a href="http://www.resuscitationjournal.com/article/PIIS0300957210004557/attachment?filename=mmc39.pdf">http://www.resuscitationjournal.com/article/PIIS0300957210004557/attachment?filename=mmc39.pdf</a>
NRP	NRP-018A	For non-intubated bradycardic neonates (P) requiring positive pressure ventilation, is the CO <sub>2</sub> monitoring device (I) more effective than chest rise, colour (C) for assessing adequate ventilation (O)?	Bradycardia and CO <sub>2</sub> monitoring	Colm O'Donnell	<a href="http://www.resuscitationjournal.com/article/PIIS0300957210004557/attachment?filename=mmc40.pdf">http://www.resuscitationjournal.com/article/PIIS0300957210004557/attachment?filename=mmc40.pdf</a>

## Appendix A (Continued)

Task force	WS ID	PICO title	Short title	Authors	URL
NRP	NRP-018B	For non-intubated bradycardic neonates (P) requiring positive pressure ventilation, is the CO <sub>2</sub> monitoring device (I) more effective than chest rise, colour (C) for assessing adequate ventilation (O)?	Bradycardia and CO <sub>2</sub> monitoring	Masanori Tamura	<a href="http://www.resuscitationjournal.com/article/PIIS0300957210004557/attachment?filename=mmc41.pdf">http://www.resuscitationjournal.com/article/PIIS0300957210004557/attachment?filename=mmc41.pdf</a>
NRP	NRP-018C	For non-intubated bradycardic neonates (P) requiring positive pressure ventilation, is the CO <sub>2</sub> monitoring device (I) more effective than chest rise, colour (C) for assessing adequate ventilation (O)?	Bradycardia and CO <sub>2</sub> monitoring	Steven Ringer	<a href="http://www.resuscitationjournal.com/article/PIIS0300957210004557/attachment?filename=mmc42.pdf">http://www.resuscitationjournal.com/article/PIIS0300957210004557/attachment?filename=mmc42.pdf</a>
NRP	NRP-019A	In neonates requiring resuscitation, (P) will the early use of supplemental glucose (I) during and/or following delivery room resuscitation, versus none (C) improve outcome (i.e., avoidance of hypoglycaemia, reduced long-term neurological morbidity) (O)?	Supplemental glucose	Jane McGowan	<a href="http://www.resuscitationjournal.com/article/PIIS0300957210004557/attachment?filename=mmc43.pdf">http://www.resuscitationjournal.com/article/PIIS0300957210004557/attachment?filename=mmc43.pdf</a>
NRP	NRP-019B	In neonates requiring resuscitation, (P) will the early use of supplemental glucose (I) during and/or following delivery room resuscitation, versus none (C) improve outcome (i.e., avoidance of hypoglycaemia, reduced long-term neurological morbidity) (O)?	Supplemental glucose	Jeffrey Perlman	<a href="http://www.resuscitationjournal.com/article/PIIS0300957210004557/attachment?filename=mmc44.pdf">http://www.resuscitationjournal.com/article/PIIS0300957210004557/attachment?filename=mmc44.pdf</a>
NRP	NRP-020A	In neonates requiring resuscitation, does the administration of emergency medications (P) by intra-osseous infusion (I) versus the intravenous route improve outcome (O)?	IO versus IV	William Engle	<a href="http://www.resuscitationjournal.com/article/PIIS0300957210004557/attachment?filename=mmc45.pdf">http://www.resuscitationjournal.com/article/PIIS0300957210004557/attachment?filename=mmc45.pdf</a>
NRP	NRP-021A	In neonates requiring resuscitation and not responding to CPR (P), does the administration of sodium bicarbonate (I) versus no bicarbonate (C) improve outcome (O)?	Sodium bicarbonate	Jeffrey Perlman	<a href="http://www.resuscitationjournal.com/article/PIIS0300957210004557/attachment?filename=mmc46.pdf">http://www.resuscitationjournal.com/article/PIIS0300957210004557/attachment?filename=mmc46.pdf</a>
NRP	NRP-021B	In neonates requiring resuscitation and not responding to CPR (P), does the administration of sodium bicarbonate (I) versus no bicarbonate (C) improve outcome (O)?	Sodium bicarbonate	Dianne Atkins, Sam Richmond	<a href="http://www.resuscitationjournal.com/article/PIIS0300957210004557/attachment?filename=mmc47.pdf">http://www.resuscitationjournal.com/article/PIIS0300957210004557/attachment?filename=mmc47.pdf</a>
NRP	NRP-022A	In apneic neonates suspected of narcotic depression (P), does naloxone (I) when compared to effective ventilation without naloxone (C) improve outcome (O)?	Nalaxone	Ruth Guinsburg	<a href="http://www.resuscitationjournal.com/article/PIIS0300957210004557/attachment?filename=mmc48.pdf">http://www.resuscitationjournal.com/article/PIIS0300957210004557/attachment?filename=mmc48.pdf</a>
NRP	NRP-022B	In apneic neonates suspected of narcotic depression (P), does naloxone (I) when compared to effective ventilation without naloxone (C) improve outcome (O)?	Nalaxone	Myra Wyckoff	<a href="http://www.resuscitationjournal.com/article/PIIS0300957210004557/attachment?filename=mmc49.pdf">http://www.resuscitationjournal.com/article/PIIS0300957210004557/attachment?filename=mmc49.pdf</a>
NRP	NRP-023A	In preterm neonates under radiant warmers (P), does increased room temperature, thermal mattress, or other intervention (I) as compared to plastic wraps alone (C) improve outcome (O)?	Warming adjuncts	Marilyn B. Escobedo, Michael Watkinson	<a href="http://www.resuscitationjournal.com/article/PIIS0300957210004557/attachment?filename=mmc50.pdf">http://www.resuscitationjournal.com/article/PIIS0300957210004557/attachment?filename=mmc50.pdf</a>

## Appendix A (Continued)

Task force	WS ID	PICO title	Short title	Authors	URL
NRP	NRP-024A	In term neonates at risk for hypoxic-ischaemic encephalopathy secondary to intra-partum hypoxia (P) does selective/whole body cooling (I) versus standard therapy (C), result in improved outcome (O)?	Hypothermia (induced)	Jeffrey Perlman	<a href="http://www.resuscitationjournal.com/article/PIIS0300957210004557/attachment?filename=mmc51.pdf">http://www.resuscitationjournal.com/article/PIIS0300957210004557/attachment?filename=mmc51.pdf</a>
NRP	NRP-024B	In term neonates at risk for hypoxic-ischaemic encephalopathy secondary to intra-partum hypoxia (P) does selective/whole body cooling (I) versus standard therapy (C), result in improved outcome (O)?	Hypothermia (induced)	Peter Davis	<a href="http://www.resuscitationjournal.com/article/PIIS0300957210004557/attachment?filename=mmc52.pdf">http://www.resuscitationjournal.com/article/PIIS0300957210004557/attachment?filename=mmc52.pdf</a>
NRP	NRP-025A	In term neonates without a detectable heart rate and no other signs of life (P) is 10 min (I) as opposed to 15 min or longer (C) of effective resuscitation a reliable measure of outcome (abnormal neurological examination and/or death) (O)?	Duration of CPR with asystole and outcome	Steve Byrne	<a href="http://www.resuscitationjournal.com/article/PIIS0300957210004557/attachment?filename=mmc53.pdf">http://www.resuscitationjournal.com/article/PIIS0300957210004557/attachment?filename=mmc53.pdf</a>
NRP	NRP-025B	In term neonates without a detectable heart rate and no other signs of life (P) is 10 min (I) as opposed to 15 min or longer (C) of effective resuscitation a reliable measure of outcome (abnormal neurological examination and/or death) (O)?	Duration of CPR with asystole and outcome	Jay Goldsmith	<a href="http://www.resuscitationjournal.com/article/PIIS0300957210004557/attachment?filename=mmc54.pdf">http://www.resuscitationjournal.com/article/PIIS0300957210004557/attachment?filename=mmc54.pdf</a>
NRP	NRP-025C	In term neonates without a detectable heart rate and no other signs of life (P) is 10 min (I) as opposed to 15 min or longer (C) of effective resuscitation a reliable measure of outcome (abnormal neurological examination and/or death) (O)?	Duration of CPR with asystole and outcome	Ruth Guinsburg	<a href="http://www.resuscitationjournal.com/article/PIIS0300957210004557/attachment?filename=mmc55.pdf">http://www.resuscitationjournal.com/article/PIIS0300957210004557/attachment?filename=mmc55.pdf</a>
NRP	NRP-026A	In term neonates with a heart rate <60 and no other signs of life (P), is 10 min (I) as opposed to 15 min or longer (C) of effective resuscitation a reliable measure of outcome (abnormal neurological examination and/or death) (O)?	Duration of CPR with bradycardia and outcome	Steve Byrne	<a href="http://www.resuscitationjournal.com/article/PIIS0300957210004557/attachment?filename=mmc56.pdf">http://www.resuscitationjournal.com/article/PIIS0300957210004557/attachment?filename=mmc56.pdf</a>
NRP	NRP-026B	In term neonates with a heart rate <60 and no other signs of life (P), is ten minutes (I) as opposed to 15 min or longer (C) of effective resuscitation a reliable measure of outcome (abnormal neurological examination and/or death) (O)?	Duration of CPR with bradycardia and outcome	Jay Goldsmith	<a href="http://www.resuscitationjournal.com/article/PIIS0300957210004557/attachment?filename=mmc57.pdf">http://www.resuscitationjournal.com/article/PIIS0300957210004557/attachment?filename=mmc57.pdf</a>
NRP	NRP-026C	In term neonates with a heart rate <60 and no other signs of life (P), is ten minutes (I) as opposed to 15 min or longer (C) of effective resuscitation a reliable measure of outcome (abnormal neurological examination and/or death) (O)?	Duration of CPR with bradycardia and outcome	Ruth Guinsburg	<a href="http://www.resuscitationjournal.com/article/PIIS0300957210004557/attachment?filename=mmc58.pdf">http://www.resuscitationjournal.com/article/PIIS0300957210004557/attachment?filename=mmc58.pdf</a>

## Appendix A (Continued)

Task force	WS ID	PICO title	Short title	Authors	URL
NRP	NRP-027A	In neonates at the limits of viability or anomalies associated with lethal outcomes (P) does the non initiation (I) versus initiation (C) of resuscitation result in an outcome that is ethically justified (O)	Futile resuscitation rules	Steve Byrne	<a href="http://www.resuscitationjournal.com/article/PIIS0300957210004557/attachment?filename=mmc59.pdf">http://www.resuscitationjournal.com/article/PIIS0300957210004557/attachment?filename=mmc59.pdf</a>
NRP	NRP-027B	In neonates at the limits of viability or anomalies associated with lethal outcomes (P) does the non initiation (I) versus initiation (C) of resuscitation result in an outcome that is ethically justified (O)	Futile resuscitation rules	Jay Goldsmith	<a href="http://www.resuscitationjournal.com/article/PIIS0300957210004557/attachment?filename=mmc60.pdf">http://www.resuscitationjournal.com/article/PIIS0300957210004557/attachment?filename=mmc60.pdf</a>
NRP	NRP-028A	In depressed neonates requiring positive pressure ventilation (P) does the administration of longer inspiratory times, higher inflation pressures, use of PEEP (I) as compared to standard management (C) improve outcome (O)?	Ventilation times and pressures	David Boyle	<a href="http://www.resuscitationjournal.com/article/PIIS0300957210004557/attachment?filename=mmc61.pdf">http://www.resuscitationjournal.com/article/PIIS0300957210004557/attachment?filename=mmc61.pdf</a>
NRP	NRP-028B	In depressed neonates requiring positive pressure ventilation (P) does the administration of longer inspiratory times, higher inflation pressures, use of PEEP (I) as compared to standard management (C) improve outcome (O)?	Ventilation times and pressures	Ben Stenson	<a href="http://www.resuscitationjournal.com/article/PIIS0300957210004557/attachment?filename=mmc62.pdf">http://www.resuscitationjournal.com/article/PIIS0300957210004557/attachment?filename=mmc62.pdf</a>
NRP	NRP-029A	In neonates requiring resuscitation and unresponsive to chest compressions/adrenaline (P) does the administration of volume (I) versus no volume (C) improve outcome (O)	Volume resuscitation with CPR	Susan Niermeyer	<a href="http://www.resuscitationjournal.com/article/PIIS0300957210004557/attachment?filename=mmc63.pdf">http://www.resuscitationjournal.com/article/PIIS0300957210004557/attachment?filename=mmc63.pdf</a>
NRP	NRP-029B	In neonates requiring resuscitation and unresponsive to chest compressions/adrenaline (P) does the administration of volume (I) versus no volume (C) improve outcome (O)	Volume resuscitation with CPR	Douglas McMillan	<a href="http://www.resuscitationjournal.com/article/PIIS0300957210004557/attachment?filename=mmc64.pdf">http://www.resuscitationjournal.com/article/PIIS0300957210004557/attachment?filename=mmc64.pdf</a>
NRP	NRP-029C	In neonates requiring resuscitation and unresponsive to chest compressions/adrenaline (P) does the administration of volume (I) versus no volume (C) improve outcome (O)	Volume resuscitation with CPR	Masanori Tamura	<a href="http://www.resuscitationjournal.com/article/PIIS0300957210004557/attachment?filename=mmc65.pdf">http://www.resuscitationjournal.com/article/PIIS0300957210004557/attachment?filename=mmc65.pdf</a>
NRP	NRP-030A	In neonates (P), does delayed cord clamping cord or milking of the cord (I) versus standard management (C), improve outcome (O)	Umbilical cord clamping and milking	Susan Niermeyer	<a href="http://www.resuscitationjournal.com/article/PIIS0300957210004557/attachment?filename=mmc66.pdf">http://www.resuscitationjournal.com/article/PIIS0300957210004557/attachment?filename=mmc66.pdf</a>
NRP	NRP-030B	In neonates (P), does delayed cord clamping cord or milking of the cord (I) versus standard management (C), improve outcome (O)	Umbilical cord clamping and milking	Dianne Atkins, Nalini Singhal	<a href="http://www.resuscitationjournal.com/article/PIIS0300957210004557/attachment?filename=mmc67.pdf">http://www.resuscitationjournal.com/article/PIIS0300957210004557/attachment?filename=mmc67.pdf</a>
NRP	NRP-030C	In neonates (P), does delayed cord clamping cord or milking of the cord (I) versus standard management (C), improve outcome (O) (milking of the cord)	Umbilical cord clamping and milking	Gary Weiner	<a href="http://www.resuscitationjournal.com/article/PIIS0300957210004557/attachment?filename=mmc68.pdf">http://www.resuscitationjournal.com/article/PIIS0300957210004557/attachment?filename=mmc68.pdf</a>
NRP	NRP-030D	In neonates (P), does delayed cord clamping cord or milking of the cord (I) versus standard management (C), improve outcome (O)?	Umbilical cord clamping and milking	Rintaro Mori	<a href="http://www.resuscitationjournal.com/article/PIIS0300957210004557/attachment?filename=mmc69.pdf">http://www.resuscitationjournal.com/article/PIIS0300957210004557/attachment?filename=mmc69.pdf</a>

## Appendix A (Continued)

Task force	WS ID	PICO title	Short title	Authors	URL
NRP	NRP-031A	In neonates born to febrile mothers (P) does intervention to normalise temperature (I), compared to standard care (C) improve outcome (O)?	Maternal fever	Jeffrey Perlman	<a href="http://www.resuscitationjournal.com/article/PIIS0300957210004557/attachment?filename=mmc70.pdf">http://www.resuscitationjournal.com/article/PIIS0300957210004557/attachment?filename=mmc70.pdf</a>
NRP	NRP-031B	In neonates born to febrile mothers (P) does intervention to normalise temperature (I), compared to standard care (C) improve outcome (O)	Maternal fever	Steven Ringer	<a href="http://www.resuscitationjournal.com/article/PIIS0300957210004557/attachment?filename=mmc71.pdf">http://www.resuscitationjournal.com/article/PIIS0300957210004557/attachment?filename=mmc71.pdf</a>
NRP	NRP-032A	In participants undergoing resuscitation courses (P), does the inclusion of more realistic techniques (e.g., high fidelity manikins, in situ training) (I), as opposed to standard training (e.g., low fidelity, education centre) (C), improve outcomes (e.g., skills performance) (O)	Impact of realistic training on skills performance	Jane McGowan	<a href="http://www.resuscitationjournal.com/article/PIIS0300957210004557/attachment?filename=mmc72.pdf">http://www.resuscitationjournal.com/article/PIIS0300957210004557/attachment?filename=mmc72.pdf</a>
NRP	NRP-032B	In participants undergoing resuscitation courses (P), does the inclusion of more realistic techniques (e.g., high fidelity manikins, in-situ training) (I), as opposed to standard training (e.g., low fidelity, education centre) (C), improve outcomes (e.g., skills performance) (O)	Impact of realistic training on skills performance	Louis Halamek	<a href="http://www.resuscitationjournal.com/article/PIIS0300957210004557/attachment?filename=mmc73.pdf">http://www.resuscitationjournal.com/article/PIIS0300957210004557/attachment?filename=mmc73.pdf</a>
NRP	NRP-032C	In participants undergoing resuscitation courses (P), does the inclusion of more realistic techniques (e.g., high fidelity manikins, in situ training) (I), as opposed to standard training (e.g., low fidelity, education centre) (C), improve outcomes (e.g., skills performance) (O)	Impact of realistic training on skills performance	Khalid Aziz	<a href="http://www.resuscitationjournal.com/article/PIIS0300957210004557/attachment?filename=mmc74.pdf">http://www.resuscitationjournal.com/article/PIIS0300957210004557/attachment?filename=mmc74.pdf</a>
NRP	NRP-033A	For hospital resuscitation teams (P), do team briefings/debriefings (I), when compared to no briefings/debriefings (C), improve team performance (O)? (INTERVENTION)	Impact of debriefing on team performance	Dianne Atkins, Nalini Singhal	<a href="http://www.resuscitationjournal.com/article/PIIS0300957210004557/attachment?filename=mmc75.pdf">http://www.resuscitationjournal.com/article/PIIS0300957210004557/attachment?filename=mmc75.pdf</a>
NRP	NRP-033B	For hospital resuscitation teams (P), do team briefings/debriefings (I), when compared to no briefings/debriefings (C), improve team performance (O)? (INTERVENTION)	Impact of debriefing on team performance	Louis Halamek	<a href="http://www.resuscitationjournal.com/article/PIIS0300957210004557/attachment?filename=mmc76.pdf">http://www.resuscitationjournal.com/article/PIIS0300957210004557/attachment?filename=mmc76.pdf</a>





Writing group member	Employment	Research grant	Other research support	Speakers' bureau/honoraria	Ownership interest	Consultant/advisory board	Other
Sithembiso Velaphi	Univ of the Witwatersrand Univ-lecturer; Chris Hani Baragwanath hosp Govt hosp, principal specialist	None	None	None	None	None	None
Jonathan Wyllie	South Tees Foundation NHS Trust Health Service Provider NHS UK Consultant Neonatologist and Clinical Director of Neonatology	None	None	None	None	<sup>b</sup> Volunteer ICC Newborn Life Support ERC Volunteer author European Newborn Life Support Guidelines <sup>b</sup> Volunteer author UK Newborn Resuscitation Guidelines <sup>b</sup> Volunteer co-author Advanced Paediatric Life support Guidelines <sup>b</sup> Volunteer member Advanced Life Support Group UK <sup>b</sup> Volunteer acting chair Newborn Life Support Working Group for RC(UK) <sup>b</sup> Volunteer British Association of Perinatal Medicine Neonatal Services and staffing working group	None

This table represents the relationships of writing group members that may be perceived as actual or reasonably perceived conflicts of interest as reported on the Disclosure Questionnaire, which all members of the writing group are required to complete and submit. A relationship is considered to be "significant" if (a) the person receives \$10,000 or more during any 12-month period, or 5% or more of the person's gross income; or (b) the person owns 5% or more of the voting stock or share of the entity, or owns \$10,000 or more of the fair market value of the entity. A relationship is considered to be "modest" if it is less than "significant" under the preceding definition.

<sup>a</sup> Significant.

<sup>b</sup> Modest.

## Worksheet Collaborator Disclosures

Worksheet collaborator	Employment	Research grant	Other research support	Speakers' bureau/honoraria	Ownership interest	Consultant/advisory board	Other
Khalid Aziz	University of Alberta – Associate Professor	None	None	None	None	None	None
David Boyle	Indiana University School of Medicine, Associate Professor of Paediatrics; University Paediatric Associates, Staff Neonatologist	None	None	None	None	None	None
Steven Byrne	South Tees Hospital Foundation NHS Trust; National Health Service Trust	None	None	None	None	None	None
Peter Davis	The Royal Women's Hospital, Melbourne, Australia – Staff Neonatologist	None	None	None	None	None	None
William Engle	Indiana University School of Medicine Professor of Paediatrics	None	None	None	None	None	None
Marilyn Escobedo	University of Oklahoma – Professor of Paediatrics	None	None	None	None	None	None
Maria Fernanda de Almeida	Federal University of São Paulo: Full time work (40h/week) at Neonatal Division – Department of Paediatrics – Assoc. Prof; Brazilian Paediatric Society: Voluntary work at Brazilian Neonatal Resuscitation Program – NRP Steering Committee – Co-chair	None	None	None	None	None	None
David Field	University of Leicester: Higher educational institution – UK Government funded – Professor of Neonatal Medicine	None	None	None	None	None	None
Judith Finn	University of Western Australia – Professor	<sup>a</sup> Multiple National Health and Medical Research Grants (NH&MRC), National Heart Foundation Australia and State Government grants of >\$10,000 since 1999. No money came to me – all came to my University to employ research staff and meet research expenses. No grants were directly related to any topic on which I am undertaking a Worksheet and none involved the trialing of a commercial product	None	<sup>b</sup> Less than \$1000 from the Japanese Resuscitation Council to speak at their JRC Conference in Osaka in 2009	None	None	None





Worksheet collaborator	Employment	Research grant	Other research support	Speakers' bureau/honoraria	Ownership interest	Consultant/advisory board	Other
Michael Watkinson	NHS Heart of England Foundation Trust, Birmingham, UK This is an NHS hospital in England Consultant neonatologist	None	None	None	None	None	None
Gary M. Weiner	St. Joseph Mercy Hospital – Attending Neonatologist	None	<sup>a</sup> Received equipment on-loan (3 resuscitation mannequins, 2 sets of video recording equipment) from Laerdal Medical Corporation to be used to complete a research project evaluating educational methods for teaching neonatal resuscitation. The value of the on-loan equipment is approximately \$35,000	None	None	None	None
Myra Wyckoff	UT Southwestern Medical Center at Dallas – Associate Professor of Paediatrics	<sup>a</sup> PI, American Academy of Paediatrics. Neonatal Resuscitation Program. The ergonomics of neonatal cardiac compressions. \$71,030. January 2008–2009 The funding comes to the institution <sup>b</sup> Co-Investigator (Mentor), American Academy of Paediatrics Neonatal Resuscitation Program Young Investigator Grant. Effectiveness of Plastic Head Coverings for Hypothermia Prevention in Preterm Newborns. January 2009–January 2010, \$10,000 The funding comes to the institution	None	<sup>b</sup> February 5, 2009 Paediatric Grand Rounds. University of Oklahoma Health Sciences Center. OKC, OK	None	None	None

This table represents the relationships of worksheet collaborators members that may be perceived as actual or reasonably perceived conflicts of interest as reported on the Disclosure Questionnaire, which all worksheet collaborators are required to complete and submit. A relationship is considered to be “significant” if (a) the person receives \$10,000 or more during any 12-month period, or 5% or more of the person's gross income; or (b) the person owns 5% or more of the voting stock or share of the entity, or owns \$10,000 or more of the fair market value of the entity. A relationship is considered to be “modest” if it is less than “significant” under the preceding definition.

<sup>a</sup> Significant.

<sup>b</sup> Modest.

## References

- Perlmán JM, Risser R. Cardiopulmonary resuscitation in the delivery room: associated clinical events. *Arch Pediatr Adolesc Med* 1995;149:20–5.
- Barber CA, Wyckoff MH. Use and efficacy of endotracheal versus intravenous epinephrine during neonatal cardiopulmonary resuscitation in the delivery room. *Pediatrics* 2006;118:1028–34.
- 2005 International Consensus on Cardiopulmonary Resuscitation and Emergency Cardiovascular Care Science with Treatment Recommendations. Part 7: Neonatal resuscitation. *Resuscitation* 2005;67:293–303.
- 2005 International Consensus on Cardiopulmonary Resuscitation and Emergency Cardiovascular Care Science with Treatment Recommendations. Part 7: Neonatal resuscitation. *Circulation* 2005;112. III-91–9.
- Dawes GS. *Foetal and Neonatal Physiology*, vol. 149. Chicago: Year Book Medical Publishers; 1968.
- Owen CJ, Wyllie JP. Determination of heart rate in the baby at birth. *Resuscitation* 2004;60:213–7.
- Kamlin CO, Dawson JA, O'Donnell CP, et al. Accuracy of pulse oximetry measurement of heart rate of newborn infants in the delivery room. *J Pediatr* 2008;152:756–60.
- Dawson JA, Kamlin CO, Wong C, et al. Oxygen saturation and heart rate during delivery room resuscitation of infants <30 weeks' gestation with air or 100% oxygen. *Arch Dis Child Fetal Neonatal Ed* 2009;94:F87–91.
- Altuncu E, Ozek E, Bilgen H, Topuzoglu A, Kavuncuoglu S. Percentiles of oxygen saturations in healthy term newborns in the first minutes of life. *Eur J Pediatr* 2008;167:687–8.
- O'Donnell CP, Kamlin CO, Davis PG, Morley CJ. Obtaining pulse oximetry data in neonates: a randomised crossover study of sensor application techniques. *Arch Dis Child Fetal Neonatal Ed* 2005;90:F84–5.
- Wang CL, Anderson C, Leone TA, Rich W, Govindaswami B, Finer NN. Resuscitation of preterm neonates by using room air or 100% oxygen. *Pediatrics* 2008;121:1083–9.
- Vento M, Asensi M, Sastre J, Garcia-Sala F, Pallardo FV, Vina J. Resuscitation with room air instead of 100% oxygen prevents oxidative stress in moderately asphyxiated term neonates. *Pediatrics* 2001;107:642–7.
- Saugstad OD, Rootwelt T, Aalen O. Resuscitation of asphyxiated newborn infants with room air or oxygen: an international controlled trial: the Resair 2 study. *Pediatrics* 1998;102:e1.
- Davis PG, Tan A, O'Donnell CP, Schulze A. Resuscitation of newborn infants with 100% oxygen or air: a systematic review and meta-analysis. *Lancet* 2004;364:1329–33.
- Rabi Y, Rabi D, Yee W. Room air resuscitation of the depressed newborn: a systematic review and meta-analysis. *Resuscitation* 2007;72:353–63.
- Lakshminrusimha S, Russell JA, Steinhorn RH, et al. Pulmonary hemodynamics in neonatal lambs resuscitated with 21%, 50%, and 100% oxygen. *Pediatr Res* 2007;62:313–8.
- Solberg R, Andresen JH, Escrig R, Vento M, Saugstad OD. Resuscitation of hypoxic newborn piglets with oxygen induces a dose-dependent increase in markers of oxidation. *Pediatr Res* 2007;62:559–63.
- Solas AB, Kutzsche S, Vinje M, Saugstad OD. Cerebral hypoxemia-ischemia and reoxygenation with 21% or 100% oxygen in newborn piglets: effects on extracellular levels of excitatory amino acids and microcirculation. *Pediatr Crit Care Med* 2001;2:340–5.
- Presti AL, Kishkurno SV, Slinko SK, et al. Reoxygenation with 100% oxygen versus room air: late neuroanatomical and neurofunctional outcome in neonatal mice with hypoxic-ischemic brain injury. *Pediatr Res* 2006;60:55–9.
- Escrig R, Arruza L, Izquierdo I, et al. Achievement of targeted saturation values in extremely low gestational age neonates resuscitated with low or high oxygen concentrations: a prospective, randomized trial. *Pediatrics* 2008;121:875–81.
- Gungor S, Kurt E, Teksoz E, Goktolga U, Ceyhan T, Baser I. Oronasopharyngeal suction versus no suction in normal and term infants delivered by elective cesarean section: a prospective randomized controlled trial. *Gynecol Obstet Invest* 2006;61:9–14.
- Waltman PA, Brewer JM, Rogers BP, May WL. Building evidence for practice: a pilot study of newborn bulb suctioning at birth. *J Midwifery Womens Health* 2004;49:32–8.
- Simbruner G, Coradello H, Fodor M, Havelec L, Lubic G, Pollak A. Effect of tracheal suction on oxygenation, circulation, and lung mechanics in newborn infants. *Arch Dis Child* 1981;56:326–30.
- Usta IM, Mercer BM, Sibai BM. Risk factors for meconium aspiration syndrome. *Obstet Gynecol* 1995;86:230–4.
- Rossi EM, Philipson EH, Williams TG, Kalhan SC. Meconium aspiration syndrome: intrapartum and neonatal attributes. *Am J Obstet Gynecol* 1989;161:1106–10.
- Al Takroni AM, Parvathi CK, Mendis KB, Hassan S, Reddy I, Kudair HA. Selective tracheal suctioning to prevent meconium aspiration syndrome. *Int J Gynaecol Obstet* 1998;63:259–63.
- Gupta V, Bhatia BD, Mishra OP. Meconium stained amniotic fluid: antenatal, intrapartum and neonatal attributes. *Indian Pediatr* 1996;33:293–7.
- Vyas H, Milner AD, Hopkin IE, Boon AW. Physiologic responses to prolonged and slow-rise inflation in the resuscitation of the asphyxiated newborn infant. *J Pediatr* 1981;99:635–9.
- te Pas AB, Walther FJ. A randomized, controlled trial of delivery-room respiratory management in very preterm infants. *Pediatrics* 2007;120:322–9.
- Lindner W, Hogel J, Pohlandt F. Sustained pressure-controlled inflation or intermittent mandatory ventilation in preterm infants in the delivery room? A randomized, controlled trial on initial respiratory support via nasopharyngeal tube. *Acta Paediatr* 2005;94:303–9.
- Harling AE, Beresford MW, Vince GS, Bates M, Yoxall CW. Does sustained lung inflation at resuscitation reduce lung injury in the preterm infant? *Arch Dis Child Fetal Neonatal Ed* 2005;90:F406–10.
- Boon AW, Milner AD, Hopkin IE. Lung expansion, tidal exchange, and formation of the functional residual capacity during resuscitation of asphyxiated neonates. *J Pediatr* 1979;95:1031–6.
- Lindner W, Vossbeck S, Hummler H, Pohlandt F. Delivery room management of extremely low birth weight infants: spontaneous breathing or intubation? *Pediatrics* 1999;103:961–7.
- Upton CJ, Milner AD. Endotracheal resuscitation of neonates using a rebreathing bag. *Arch Dis Child* 1991;66:39–42.
- Hillman NH, Moss TJ, Kallapur SG, et al. Brief, large tidal volume ventilation initiates lung injury and a systemic response in fetal sheep. *Am J Respir Crit Care Med* 2007;176:575–81.
- Finer NN, Carlo WA, Duara S, et al. Delivery room continuous positive airway pressure/positive end-expiratory pressure in extremely low birth weight infants: a feasibility trial. *Pediatrics* 2004;114:651–7.
- Siew ML, Te Pas AB, Wallace MJ, et al. Positive end-expiratory pressure enhances development of a functional residual capacity in preterm rabbits ventilated from birth. *J Appl Physiol* 2009;106:1487–93.
- te Pas AB, Siew M, Wallace MJ, et al. Establishing functional residual capacity at birth: the effect of sustained inflation and positive end-expiratory pressure in a preterm rabbit model. *Pediatr Res* 2009;65:537–41.
- Polglase GR, Hooper SB, Gill AW, et al. Cardiovascular and pulmonary consequences of airway recruitment in preterm lambs. *J Appl Physiol* 2009;106:1347–55.
- Probyn ME, Hooper SB, Dargaville PA, et al. Positive end expiratory pressure during resuscitation of premature lambs rapidly improves blood gases without adversely affecting arterial pressure. *Pediatr Res* 2004;56:198–204.
- Morley CJ, Davis PG, Doyle LW, Brion LP, Hascoet JM, Carlin JB. Nasal CPAP or intubation at birth for very preterm infants. *N Engl J Med* 2008;358:700–8.
- Oddie S, Wyllie J, Scally A. Use of self-inflating bags for neonatal resuscitation. *Resuscitation* 2005;67:109–12.
- Hussey SC, Ryan CA, Murphy BP. Comparison of three manual ventilation devices using an intubated mannequin. *Arch Dis Child Fetal Neonatal Ed* 2004;89:F490–3.
- Finer NN, Rich W, Craft A, Henderson C. Comparison of methods of bag and mask ventilation for neonatal resuscitation. *Resuscitation* 2001;49:299–305.
- Bennett S, Finer NN, Rich W, Vaucher Y. A comparison of three neonatal resuscitation devices. *Resuscitation* 2005;67:113–8.
- Singh R. Controlled trial to evaluate the use of LMA for neonatal resuscitation. *J Anaesth Clin Pharmacol* 2005;21:303–6.
- Trevisanuto D, Micaglio M, Pitton M, Magarotto M, Piva D, Zanardo V. Laryngeal mask airway: is the management of neonates requiring positive pressure ventilation at birth changing? *Resuscitation* 2004;62:151–7.
- Gandini D, Brimacombe JR. Neonatal resuscitation with the laryngeal mask airway in normal and low birth weight infants. *Anesth Analg* 1999;89:642–3.
- Esmail N, Saleh M, Ali A. Laryngeal mask airway versus endotracheal intubation for Apgar score improvement in neonatal resuscitation. *Egypt J Anesthesiol* 2002;18:115–21.
- Zanardo V, Simbi AK, Savio V, Micaglio M, Trevisanuto D. Neonatal resuscitation by laryngeal mask airway after elective cesarean section. *Fetal Diagn Ther* 2004;19:228–31.
- Palme C, Nystrom B, Tunell R. An evaluation of the efficiency of face masks in the resuscitation of newborn infants. *Lancet* 1985;1:207–10.
- O'Donnell CP, Davis PG, Lau R, Dargaville PA, Doyle LW, Morley CJ. Neonatal resuscitation 2: an evaluation of manual ventilation devices and face masks. *Arch Dis Child Fetal Neonatal Ed* 2005;90:F392–6.
- Capasso L, Capasso A, Raimondi F, Vendemmia M, Araimo G, Paludetto R. A randomized trial comparing oxygen delivery on intermittent positive pressure with nasal cannulae versus facial mask in neonatal primary resuscitation. *Acta Paediatr* 2005;94:197–200.
- Wood FE, Morley CJ, Dawson JA, et al. Assessing the effectiveness of two round neonatal resuscitation masks: study 1. *Arch Dis Child Fetal Neonatal Ed* 2008;93:F235–7.
- Bang AT, Bang RA, Baitule SB, Reddy HM, Deshmukh MD. Management of birth asphyxia in home deliveries in rural Gadchiroli: the effect of two types of birth attendants and of resuscitating with mouth-to-mouth, tube-mask or bag-mask. *J Perinatol* 2005;25(Suppl. 1):S82–91.
- Massawe A, Kilewo C, Irani S, et al. Assessment of mouth-to-mask ventilation in resuscitation of asphyxial newborn babies. A pilot study. *Trop Med Int Health* 1996;1:865–73.
- Roberts RB, Day RL. Mouth-to-tube resuscitation of the neonate. II. The transmission of bacteria through endotracheal tubes and its prevention. *Anesth Analg* 1973;52:242–5.
- Milner AD, Stokes GM, Tunell R, McKeough M, Martin H. Laboratory assessment of Laerdal mouth tube mask prototype resuscitation device. *Med Biol Eng Comput* 1992;30:117–9.
- Terndrup TE, Kanter RK, Cherry RA. A comparison of infant ventilation methods performed by prehospital personnel. *Ann Emerg Med* 1989;18:607–11.
- Coffey PS, Kelly K, Tsu V. Preferences and practices: use of neonatal resuscitation devices in low-resource settings. *J Trop Pediatr* 2007;53:415–9.

61. Polglase GR, Hillman NH, Pillow JJ, et al. Positive end-expiratory pressure and tidal volume during initial ventilation of preterm lambs. *Pediatr Res* 2008;64:517–22.
62. Probyn ME, Hooper SB, Dargaville PA, McCallion N, Harding R, Morley CJ. Effects of tidal volume and positive end-expiratory pressure during resuscitation of very premature lambs. *Acta Paediatr* 2005;94:1764–70.
63. Kattwinkel J, Stewart C, Walsh B, Gurka M, Paget-Brown A. Responding to compliance changes in a lung model during manual ventilation: perhaps volume, rather than pressure, should be displayed. *Pediatrics* 2009;123:e465–70.
64. Resende JG, Zaconeta CA, Ferreira AC, et al. Evaluation of peak inspiratory pressure, tidal volume and respiratory rate during ventilation of premature lambs using a self-inflating bag. *J Pediatr (Rio J)* 2006;82:279–83.
65. Wood FE, Morley CJ, Dawson JA, et al. Improved techniques reduce face mask leak during simulated neonatal resuscitation: study 2. *Arch Dis Child Fetal Neonatal Ed* 2008;93:F230–4.
66. Hosono S, Inami I, Fujita H, Minato M, Takahashi S, Mugishima H. A role of end-tidal CO<sub>2</sub> monitoring for assessment of tracheal intubations in very low birth weight infants during neonatal resuscitation at birth. *J Perinat Med* 2009;37:79–84.
67. Repetto JE, Donohue P-CP, Baker SF, Kelly L, Noguee LM. Use of capnography in the delivery room for assessment of endotracheal tube placement. *J Perinatol* 2001;21:284–7.
68. Roberts WA, Maniscalco WM, Cohen AR, Litman RS, Chhibber A. The use of capnography for recognition of esophageal intubation in the neonatal intensive care unit. *Pediatr Pulmonol* 1995;19:262–8.
69. Aziz HF, Martin JB, Moore JJ. The pediatric disposable end-tidal carbon dioxide detector role in endotracheal intubation in newborns. *J Perinatol* 1999;19:110–3.
70. Garey DM, Ward R, Rich W, Heldt G, Leone T, Finer NN. Tidal volume threshold for colorimetric carbon dioxide detectors available for use in neonates. *Pediatrics* 2008;121:e1524–7.
71. Hughes SM, Blake BL, Woods SL, Lehmann CU. False-positive results on colorimetric carbon dioxide analysis in neonatal resuscitation: potential for serious patient harm. *J Perinatol* 2007;27:800–1.
72. Leone TA, Lange A, Rich W, Finer NN. Disposable colorimetric carbon dioxide detector use as an indicator of a patent airway during noninvasive mask ventilation. *Pediatrics* 2006;118:202–4.
73. Finer NN, Rich W, Wang C, Leone T. Airway obstruction during mask ventilation of very low birth weight infants during neonatal resuscitation. *Pediatrics* 2009;123:865–9.
74. Berg RA, Hilwig RW, Kern KB, Babar I, Ewy GA. Simulated mouth-to-mouth ventilation and chest compressions (bystander cardiopulmonary resuscitation) improves outcome in a swine model of prehospital pediatric asphyxial cardiac arrest. *Crit Care Med* 1999;27:1893–9.
75. Berg RA, Hilwig RW, Kern KB, Ewy GA. “Bystander” chest compressions and assisted ventilation independently improve outcome from piglet asphyxial pulseless “cardiac arrest”. *Circulation* 2000;101:1743–8.
76. Dean JM, Koehler RC, Schleien CL, et al. Improved blood flow during prolonged cardiopulmonary resuscitation with 30% duty cycle in infant pigs. *Circulation* 1991;84:896–904.
77. Babbs CF, Nadkarni V. Optimizing chest compression to rescue ventilation ratios during one-rescuer CPR by professionals and lay persons: children are not just little adults. *Resuscitation* 2004;61:173–81.
78. Srikanth SK, Berg RA, Cox T, Tice L, Nadkarni VM. Effect of one-rescuer compression/ventilation ratios on cardiopulmonary resuscitation in infant, pediatric, and adult manikins. *Pediatr Crit Care Med* 2005;6:293–7.
79. Whyte SD, Sinha AK, Wyllie JP. Neonatal resuscitation—a practical assessment. *Resuscitation* 1999;40:21–5.
80. Grengor JL. Quality of cardiac massage with ratio compression–ventilation 5/1 and 15/2. *Resuscitation* 2002;55:263–7.
81. Wik L, Steen PA. The ventilation/compression ratio influences the effectiveness of two rescuer advanced cardiac life support on a manikin. *Resuscitation* 1996;31:113–9.
82. Dorph E, Wik L, Steen PA. Effectiveness of ventilation-compression ratios 1:5 and 2:15 in simulated single rescuer paediatric resuscitation. *Resuscitation* 2002;54:259–64.
83. Kinney SB, Tibballs J. An analysis of the efficacy of bag-valve-mask ventilation and chest compression during different compression–ventilation ratios in manikin-simulated paediatric resuscitation. *Resuscitation* 2000;43:115–20.
84. Haque IU, Udassi JP, Udassi S, Theriaque DW, Shuster JJ, Zaritsky AL. Chest compression quality and rescuer fatigue with increased compression to ventilation ratio during single rescuer pediatric CPR. *Resuscitation* 2008;79:82–9.
85. Kitamura T, Iwami T, Kawamura T, et al. Conventional and chest-compression-only cardiopulmonary resuscitation by bystanders for children who have out-of-hospital cardiac arrests: a prospective, nationwide, population-based cohort study. *Lancet* 2010;375:1347–54.
86. Houry PK, Frank LR, Menegazzi JJ, Taylor R. A randomized, controlled trial of two-thumb vs. two-finger chest compression in a swine infant model of cardiac arrest. *Prehosp Emerg Care* 1997;1:65–7.
87. Menegazzi JJ, Auble TE, Nicklas KA, Hosack GM, Rack L, Goode JS. Two-thumb versus two-finger chest compression during CRP in a swine infant model of cardiac arrest. *Ann Emerg Med* 1993;22:240–3.
88. Udassi JP, Udassi S, Theriaque DW, Shuster JJ, Zaritsky AL, Haque IU. Effect of alternative chest compression techniques in infant and child on rescuer performance. *Pediatr Crit Care Med* 2009;10:328–33.
89. David R. Closed chest cardiac massage in the newborn infant. *Pediatrics* 1988;81:552–4.
90. Thaler MM, Stobie GH. An improved technique of external cardiac compression in infants and young children. *N Engl J Med* 1963;269:606–10.
91. Whitelaw CC, Slywka B, Goldsmith LJ. Comparison of a two-finger versus two-thumb method for chest compressions by healthcare providers in an infant mechanical model. *Resuscitation* 2000;43:213–6.
92. Moya F, James LS, Burnard ED, Hanks EC. Cardiac massage in the newborn infant through the intact chest. *Am J Obstet Gynecol* 1962;84:798–803.
93. Orłowski JP. Optimum position for external cardiac compression in infants and young children. *Ann Emerg Med* 1986;15:667–73.
94. Phillips GW, Zideman DA. Relation of infant heart to sternum: its significance in cardiopulmonary resuscitation. *Lancet* 1986;1:1024–5.
95. Braga MS, Dominguez TE, Pollock AN, et al. Estimation of optimal CPR chest compression depth in children by using computer tomography. *Pediatrics* 2009;124:e69–74.
96. Jankov RP, Asztalos EV, Skidmore MB. Favourable neurological outcomes following delivery room cardiopulmonary resuscitation of infants < or =750 g at birth. *J Paediatr Child Health* 2000;36:19–22.
97. O'Donnell AI, Gray PH, Rogers YM. Mortality and neurodevelopmental outcome for infants receiving adrenaline in neonatal resuscitation. *J Paediatr Child Health* 1998;34:551–6.
98. Crespo SG, Schoffstall JM, Fuhs LR, Spivey WH. Comparison of two doses of endotracheal epinephrine in a cardiac arrest model. *Ann Emerg Med* 1991;20:230–4.
99. Jasani MS, Nadkarni VM, Finkelstein MS, Mandell GA, Salzman SK, Norman ME. Effects of different techniques of endotracheal epinephrine administration in pediatric porcine hypoxic-hypercarbic cardiopulmonary arrest. *Crit Care Med* 1994;22:1174–80.
100. Mielke LL, Frank C, Lanzinger MJ, et al. Plasma catecholamine levels following tracheal and intravenous epinephrine administration in swine. *Resuscitation* 1998;36:187–92.
101. Roberts JR, Greenberg MI, Knaub MA, Kendrick ZV, Baskin SI. Blood levels following intravenous and endotracheal epinephrine administration. *JACEP* 1979;8:53–6.
102. Hornchen U, Schuttler J, Stoeckel H, Eichelkraut W, Hahn N. Endobronchial instillation of epinephrine during cardiopulmonary resuscitation. *Crit Care Med* 1987;15:1037–9.
103. Guay J, Lortie L. An evaluation of pediatric in-hospital advanced life support interventions using the pediatric Utstein guidelines: a review of 203 cardiorespiratory arrests. *Can J Anaesth* 2004;51:373–8.
104. Perondi MB, Reis AG, Paiva EF, Nadkarni VM, Berg RA. A comparison of high-dose and standard-dose epinephrine in children with cardiac arrest. *N Engl J Med* 2004;350:1722–30.
105. Patterson MD, Boenning DA, Klein BL, et al. The use of high-dose epinephrine for patients with out-of-hospital cardiopulmonary arrest refractory to prehospital interventions. *Pediatr Emerg Care* 2005;21:227–37.
106. Goetting MG, Paradis NA. High-dose epinephrine improves outcome from pediatric cardiac arrest. *Ann Emerg Med* 1991;20:22–6.
107. Vandycke C, Martens P. High dose versus standard dose epinephrine in cardiac arrest—a meta-analysis. *Resuscitation* 2000;45:161–6.
108. Berg RA, Otto CW, Kern KB, et al. A randomized, blinded trial of high-dose epinephrine versus standard-dose epinephrine in a swine model of pediatric asphyxial cardiac arrest. *Crit Care Med* 1996;24:1695–700.
109. Burchfield DJ, Preziosi MP, Lucas VW, Fan J. Effects of graded doses of epinephrine during asphyxia-induced bradycardia in newborn lambs. *Resuscitation* 1993;25:235–44.
110. Kirkman HN, Riley Jr HD. Posthemorrhagic anemia and shock in the newborn due to hemorrhage during delivery; report of 8 cases. *Pediatrics* 1959;24:92–6.
111. Wyckoff MH, Perlman JM, Laptook AR. Use of volume expansion during delivery room resuscitation in near-term and term infants. *Pediatrics* 2005;115:950–5.
112. Wyckoff M, Garcia D, Margraf L, Perlman J, Laptook A. Randomized trial of volume infusion during resuscitation of asphyxiated neonatal piglets. *Pediatr Res* 2007;61:415–20.
113. Mayock DE, Gleason CA. Cerebrovascular effects of rapid volume expansion in preterm fetal sheep. *Pediatr Res* 2004;55:395–9.
114. Box D, Cochran D. Safe reduction in administration of naloxone to newborn infants: an observational study. *Acta Paediatr* 2006;95:1083–6.
115. Bonta BW, Gagliardi JV, Williams V, Warshaw JB. Naloxone reversal of mild neurobehavioral depression in normal newborn infants after routine obstetric analgesia. *J Pediatr* 1979;94:102–5.
116. Gill AW, Colvin J. Use of naloxone during neonatal resuscitation in Australia: compliance with published guidelines. *J Paediatr Child Health* 2007;43:795–8.
117. Gibbs J, Newton T, Williams J, Davidson DC. Naloxone hazard in infant of opioid abuser. *Lancet* 1989;2:159–60.
118. Van Woerkom R, Beharry KD, Modanlou HD, et al. Influence of morphine and naloxone on endothelin and its receptors in newborn piglet brain vascular endothelial cells: clinical implications in neonatal care. *Pediatr Res* 2004;55:147–51.
119. Ellemunter H, Simma B, Trawogger R, Maurer H. Intraosseous lines in preterm and full term neonates. *Arch Dis Child Fetal Neonatal Ed* 1999;80:F74–5.
120. Glaeser PW, Hellmich TR, Szweczug D, Losek JD, Smith DS. Five-year experience in prehospital intraosseous infusions in children and adults. *Ann Emerg Med* 1993;22:1119–24.

121. Cramer K, Wiebe N, Hartling L, Crumley E, Vohra S. Heat loss prevention: a systematic review of occlusive skin wrap for premature neonates. *J Perinatol* 2005;25:763–9.
122. Vohra S, Roberts RS, Zhang B, Janes M, Schmidt B. Heat loss prevention (HeLP) in the delivery room: a randomized controlled trial of polyethylene occlusive skin wrapping in very preterm infants. *J Pediatr* 2004;145:750–3.
123. Almeida PG, Chandley J, Davis J, Harrigan RC. Use of the heated gel mattress and its impact on admission temperature of very low birth-weight infants. *Adv Neonatal Care* 2009;9:34–9.
124. Singh A, Duckett J, Newton T, Watkinson M. Improving neonatal unit admission temperatures in preterm babies: exothermic mattresses, polythene bags or a traditional approach? *J Perinatol* 2010;30:45–9.
125. Knobel RB, Wimmer Jr JE, Holbert D. Heat loss prevention for preterm infants in the delivery room. *J Perinatol* 2005;25:304–8.
126. Kent AL, Williams J. Increasing ambient operating theatre temperature and wrapping in polyethylene improves admission temperature in premature infants. *J Paediatr Child Health* 2008;44:325–31.
127. Petrova A, Demissie K, Rhoads GG, Smulian JC, Marcella S, Ananth CV. Association of maternal fever during labor with neonatal and infant morbidity and mortality. *Obstet Gynecol* 2001;98:20–7.
128. Lieberman E, Eichenwald E, Mathur G, Richardson D, Heffner L, Cohen A. Intrapartum fever and unexplained seizures in term infants. *Pediatrics* 2000;106:983–8.
129. Shalak LF, Perlman JM, Jackson GL, Lupton AR. Depression at birth in term infants exposed to maternal chorioamnionitis: does neonatal fever play a role? *J Perinatol* 2005;25:447–52.
130. Coimbra C, Boris-Moller F, Drake M, Wieloch T. Diminished neuronal damage in the rat brain by late treatment with the antipyretic drug dipyron or cooling following cerebral ischemia. *Acta Neuropathol* 1996;92:447–53.
131. Goetzl L, Zigelboim I, Badell M, et al. Maternal corticosteroids to prevent intrauterine exposure to hyperthermia and inflammation: a randomized, double-blind, placebo-controlled trial. *Am J Obstet Gynecol* 2006;195:1031–7.
132. Gluckman PD, Wyatt JS, Azzopardi D, et al. Selective head cooling with mild systemic hypothermia after neonatal encephalopathy: multicentre randomised trial. *Lancet* 2005;365:663–70.
133. Shankaran S, Laptook AR, Ehrenkranz RA, et al. Whole-body hypothermia for neonates with hypoxic-ischemic encephalopathy. *N Engl J Med* 2005;353:1574–84.
134. Azzopardi DV, Strohm B, Edwards AD, et al. Moderate hypothermia to treat perinatal asphyxial encephalopathy. *N Engl J Med* 2009;361:1349–58.
135. Eicher DJ, Wagner CL, Katikaneni LP, et al. Moderate hypothermia in neonatal encephalopathy: efficacy outcomes. *Pediatr Neurol* 2005;32:11–7.
136. Lin ZL, Yu HM, Lin J, Chen SQ, Liang ZQ, Zhang ZY. Mild hypothermia via selective head cooling as neuroprotective therapy in term neonates with perinatal asphyxia: an experience from a single neonatal intensive care unit. *J Perinatol* 2006;26:180–4.
137. Edwards AD, Brocklehurst P, Gunn AJ, et al. Neurological outcomes at 18 months of age after moderate hypothermia for perinatal hypoxic ischaemic encephalopathy: synthesis and meta-analysis of trial data. *BMJ* 2010;340:c363.
138. Jacobs S, Hunt R, Tarnow-Mordi W, Inder T, Davis P. Cooling for newborns with hypoxic ischaemic encephalopathy. *Cochrane Database Syst Rev* 2007;CD003311.
139. Salhab WA, Wyckoff MH, Laptook AR, Perlman JM. Initial hypoglycemia and neonatal brain injury in term infants with severe fetal acidemia. *Pediatrics* 2004;114:361–6.
140. Ondoa-Onama C, Tumwine JK. Immediate outcome of babies with low Apgar score in Mulago Hospital, Uganda. *East Afr Med J* 2003;80:22–9.
141. Klein GW, Hojsak JM, Schmeidler J, Rapaport R. Hyperglycemia and outcome in the pediatric intensive care unit. *J Pediatr* 2008;153:379–84.
142. LeBlanc MH, Huang M, Patel D, Smith EE, Devidas M. Glucose given after hypoxic ischemia does not affect brain injury in piglets. *Stroke* 1994;25:1443–7 [discussion 8].
143. Hattori H, Wasterlain CG. Posthypoxic glucose supplement reduces hypoxic-ischemic brain damage in the neonatal rat. *Ann Neurol* 1990;28:122–8.
144. McDonald SJ, Middleton P. Effect of timing of umbilical cord clamping of term infants on maternal and neonatal outcomes. *Cochrane Database Syst Rev* 2008;CD004074.
145. Rabe H, Reynolds G, Diaz-Rossello J. A systematic review and meta-analysis of a brief delay in clamping the umbilical cord of preterm infants. *Neonatology* 2008;93:138–44.
146. Aladangady N, McHugh S, Aitchison TC, Wardrop CA, Holland BM. Infants' blood volume in a controlled trial of placental transfusion at preterm delivery. *Pediatrics* 2006;117:93–8.
147. Mercer JS, Vohr BR, McGrath MM, Padbury JF, Wallach M, Oh W. Delayed cord clamping in very preterm infants reduces the incidence of intraventricular hemorrhage and late-onset sepsis: a randomized, controlled trial. *Pediatrics* 2006;117:1235–42.
148. De Leeuw R, Cuttini M, Nadai M, et al. Treatment choices for extremely preterm infants: an international perspective. *J Pediatr* 2000;137:608–16.
149. Sanders MR, Donohue PK, Oberdorfer MA, Rosenkrantz TS, Allen MC. Perceptions of the limit of viability: neonatologists' attitudes toward extremely preterm infants. *J Perinatol* 1995;15:494–502.
150. Kopelman LM, Irons TG, Kopelman AE. Neonatologists judge the "Baby Doe" regulations. *N Engl J Med* 1988;318:677–83.
151. Costeloe K, Hennessy E, Gibson AT, Marlow N, Wilkinson AR. The EPICure study: outcomes to discharge from hospital for infants born at the threshold of viability. *Pediatrics* 2000;106:659–71.
152. Field DJ, Dorling JS, Manktelow BN, Draper ES. Survival of extremely premature babies in a geographically defined population: prospective cohort study of 1994–9 compared with 2000–5. *BMJ* 2008;336:1221–3.
153. Tyson JE, Parikh NA, Langer J, Green C, Higgins RD. Intensive care for extreme prematurity—moving beyond gestational age. *N Engl J Med* 2008;358:1672–81.
154. Paris JJ. What standards apply to resuscitation at the borderline of gestational age? *J Perinatol* 2005;25:683–4.
155. Casalaz DM, Marlow N, Speidel BD. Outcome of resuscitation following unexpected apparent stillbirth. *Arch Dis Child Fetal Neonatal Ed* 1998;78:F112–5.
156. Jain L, Ferre C, Vidyasagar D, Nath S, Sheftel D. Cardiopulmonary resuscitation of apparently stillborn infants: survival and long-term outcome. *J Pediatr* 1991;118:778–82.
157. Laptook AR, Shankaran S, Ambalavanan N, et al. Outcome of term infants using apgar scores at 10 minutes following hypoxic-ischemic encephalopathy. *Pediatrics* 2009;124:1619–26.
158. Chamnanvanakij S, Perlman JM. Outcome following cardiopulmonary resuscitation in the neonate requiring ventilatory assistance. *Resuscitation* 2000;45:173–80.
159. Annibale DJ, Hulsey TC, Wagner CL, Southgate WM. Comparative neonatal morbidity of abdominal and vaginal deliveries after uncomplicated pregnancies. *Arch Pediatr Adolesc Med* 1995;149:862–7.
160. Atherton N, Parsons SJ, Mansfield P. Attendance of paediatricians at elective Caesarean sections performed under regional anaesthesia: is it warranted? *J Paediatr Child Health* 2006;42:332–6.
161. Gordon A, McKechnie EJ, Jeffery H. Pediatric presence at cesarean section: justified or not? *Am J Obstet Gynecol* 2005;193:599–605.
162. Parsons SJ, Sonneveld S, Nolan T. Is a paediatrician needed at all Caesarean sections? *J Paediatr Child Health* 1998;34:241–4.
163. Knudson MM, Khaw L, Bullard MK, et al. Trauma training in simulation: translating skills from SIM time to real time. *J Trauma* 2008;64:255–63 [discussion 63–4].
164. Wayne DB, Didwania A, Feinglass J, Fudala MJ, Barsuk JH, McGaghie WC. Simulation-based education improves quality of care during cardiac arrest team responses at an academic teaching hospital: a case-control study. *Chest* 2008;133:56–61.
165. Schwid HA, Rooke GA, Michalowski P, Ross BK. Screen-based anesthesia simulation with debriefing improves performance in a mannequin-based anesthesia simulator. *Teach Learn Med* 2001;13:92–6.
166. Kory PD, Eisen LA, Adachi M, Ribaldo VA, Rosenthal ME, Mayo PH. Initial airway management skills of senior residents: simulation training compared with traditional training. *Chest* 2007;132:1927–31.
167. Shapiro MJ, Morey JC, Small SD, et al. Simulation based teamwork training for emergency department staff: does it improve clinical team performance when added to an existing didactic teamwork curriculum? *Qual Saf Health Care* 2004;13:417–21.
168. Cherry RA, Williams J, George J, Ali J. The effectiveness of a human patient simulator in the ATLS shock skills station. *J Surg Res* 2007;139:229–35.
169. Savoldelli GL, Naik VN, Park J, Joo HS, Chow R, Hamstra SJ. Value of debriefing during simulated crisis management: oral versus video-assisted oral feedback. *Anesthesiology* 2006;105:279–85.
170. Blum RH, Raemer DB, Carroll JS, Dufresne RL, Cooper JB. A method for measuring the effectiveness of simulation-based team training for improving communication skills. *Anesth Analg* 2005;100:1375–80 [table of contents].